

WAAS CH 99701 W24A	APP CRS 240°	Rwy Idg 5500 TDZE 545 Apt Elev 547
--	------------------------	---

RNAV (GPS) RWY 24
MUSCATINE MUNI (MUT)

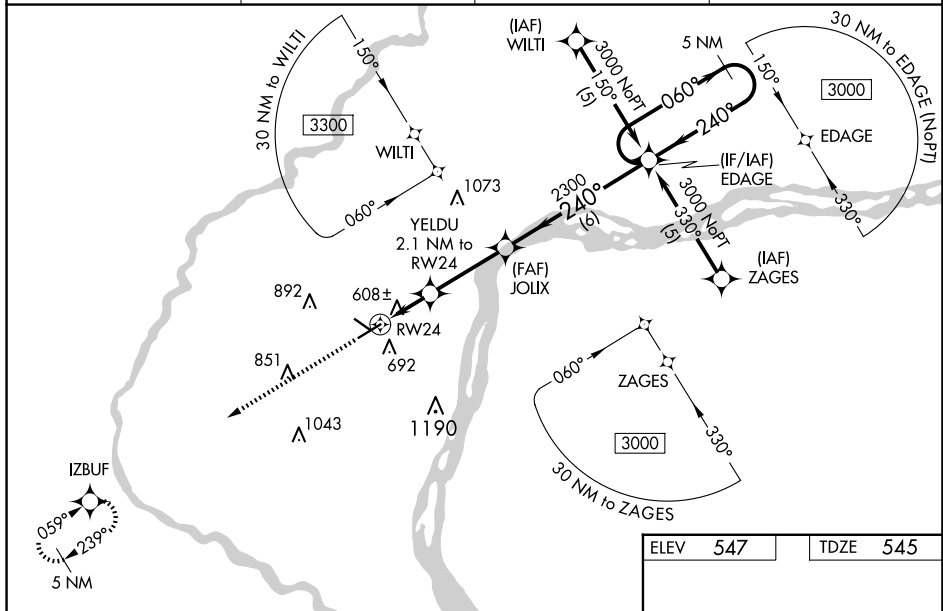
RNP APCH.


V For uncompensated Baro-VNAV systems, LNAV/VNAV NA below -16°C (4°F) or above 48°C (118°F). For inop ALS, increase LPV all visibilities to 1 SM, increase LNAV/VNAV all Cats and LNAV Cats C visibility to 1½ SM, and increase LNAV Cat D visibility to 1¼ SM. When local altimeter setting not received, use low City altimeter setting and increase LPV DA to 992 and all visibilities ½ SM; increase LNAV/VNAV DA to 1030 feet and all visibilities ¼ SM; increase all MDA 80 feet and LNAV Cats C and D visibility ¼ SM and Circling Cat C visibility ½ SM. For inop ALS when using low City altimeter setting, increase LPV all visibilities to 1 SM, LNAV/VNAV all visibilities to 1½ SM, LNAV Cats A and B visibility to 1 SM, and LNAV Cats C and D visibility to 1½ SM. Baro-VNAV and VDP NA when using low City altimeter setting.

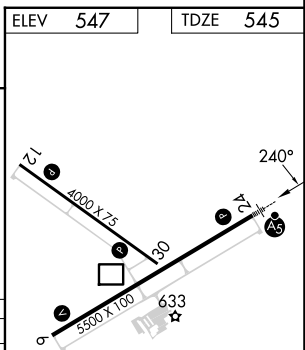
MALSR

MISSED APPROACH:
Climb to 3000 direct
IZBUF and hold.

AWOS-3P 120.625	QUAD CITY APP CON ★ 133.275 257.8	CLNC DEL 119.125	UNICOM 122.7 (CTAF) 0
---------------------------	---	----------------------------	---------------------------------

[illegible]

CATEGORY		A	B	C	D
LPV	DA	812-½ 267 (300-½)			
LNAV/ VNAV	DA	950-¾ 405 (500-¾)			
LNAV	MDA	960-½ 415 (500-½)	960-¾ 415 (500-¾)		960-1 415 (500-1)
 CIRCLING		1080-1¼ 533 (600-1¼)	1200-1¼ 653 (700-1¼)	1200-1¾ 653 (700-1¾)	1500-3 953 (1000-3)



REIL Rwy 6, 12, and 30 **L**
MIRL Rwy 6-24 and 12-30 **L**