


LOC/DME I-LUC <b>109.15</b> Chan <b>28(Y)</b>	APP CRS <b>240°</b>	Rwy Idg <b>5500</b> TDZE <b>545</b> Apt Elev <b>547</b>
---	------------------------	---

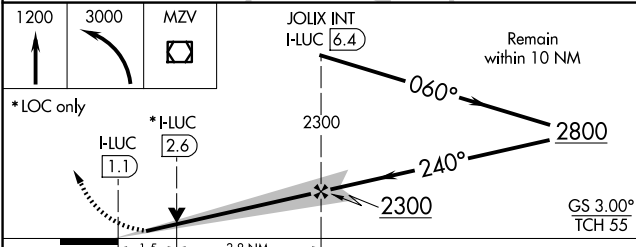
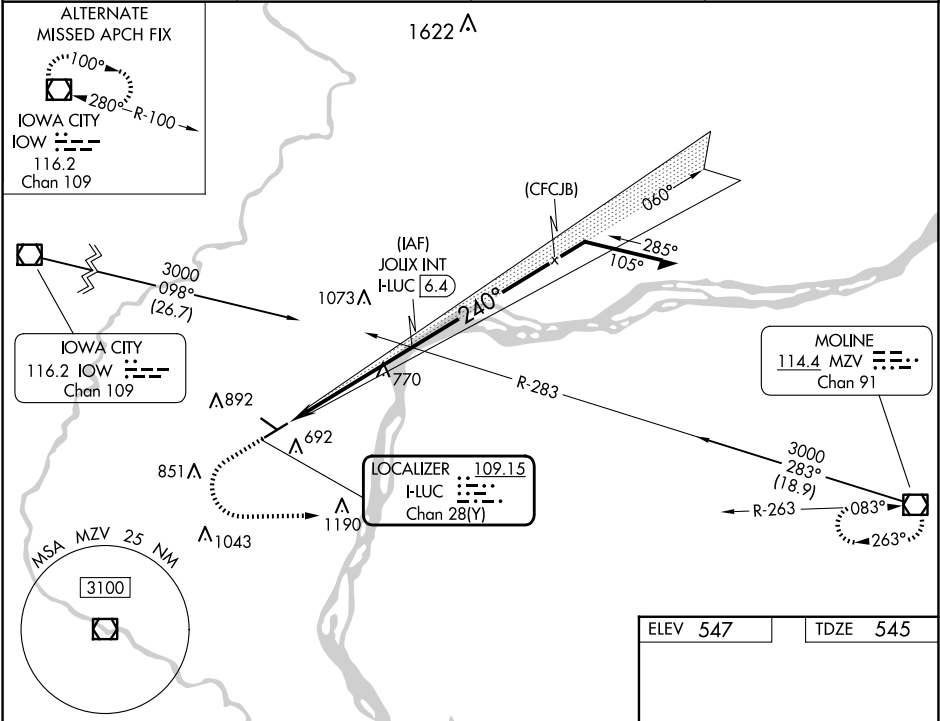
ILS or LOC RWY 24  
MUSCATINE MUNI (MUT)

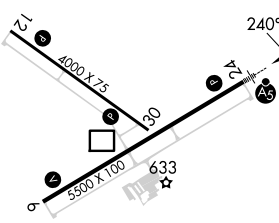
**V** VDP NA with Iowa City altimeter setting. When local altimeter setting not received, use Iowa City altimeter setting; increase DA to 825 feet; increase all MDA 80 feet and S-LOC 24 Cat C/D visibility  $\frac{3}{8}$  SM and Circling Cat C visibility  $\frac{1}{4}$  SM. For inop ALS when using Iowa City altimeter setting, increase S-ILS 24 visibility to 1 SM all Cats, and S-LOC 24 Cat C/D visibility to  $1\frac{3}{4}$  SM.

**MALSR**  


**MISSED APPROACH:** Climb to 1200 then climbing left turn to 3000 direct MZV VOR/DME and hold.

AWOS-3P <b>120.625</b>	QUAD CITY APP CON* <b>133.275 257.8</b>	CLNC DEL <b>119.125</b>	UNICOM <b>122.7 (CTAF) 0</b>
---------------------------	--	----------------------------	---------------------------------



ELEV 547	TDZE 545
	
REIL Rwy 6, 12, and 30 0	
MIRL Rwy 6-24 and 12-30 0	
FAF to MAP 5.3 NM	
Knots	60 90 120 150 180
Min:Sec	5:18 3:32 2:39 2:07 1:46

NC-3, 10 JUL 2025 to 07 AUG 2025

NC-3, 10 JUL 2025 to 07 AUG 2025