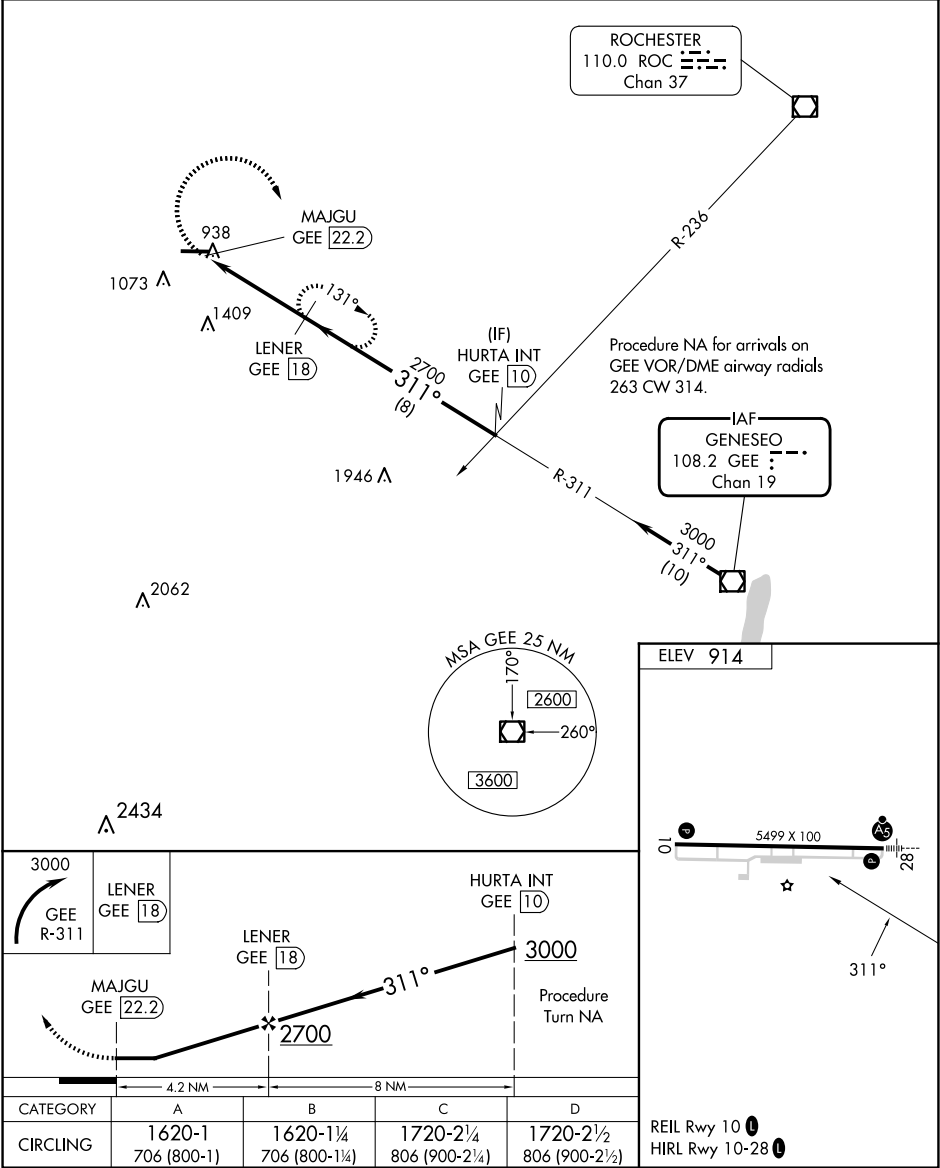


VOR/DME GEE	APP CRS	Rwy Idg	N/A
108.2	311°	TDZE	N/A
Chan 19		Apt Elev	914

VOR/DME-A
GENESEE COUNTY (GVQ)

<div><div><div>T</div><div>A</div></div></div>	When local altimeter setting not received, use Rochester altimeter setting and increase all MDA 120 feet; increase visibility Cat A ¼ SM and Cat C and D ½ SM.		MISSED APPROACH: Climbing right turn to 3000 via GEE VOR/DME R-311 to LENER/18 DME and hold, continue to climb-in-hold to 3000.	
	AWOS-3PT 127.525	ROCHESTER APP CON 123.7 322.3	CINC DEL 121.8	UNICOM 122.7 (CTAF) 0



NE-2, 10 JUL 2025 to 07 AUG 2025

NE-2, 10 JUL 2025 to 07 AUG 2025