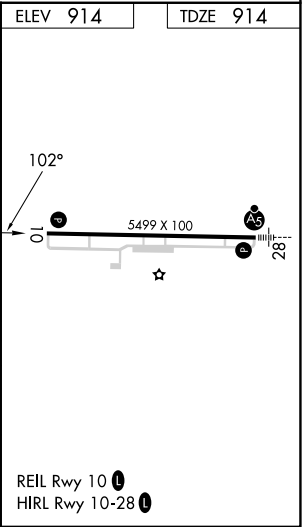
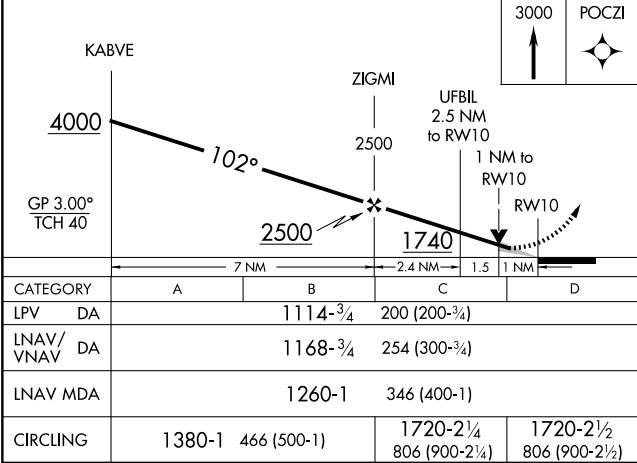
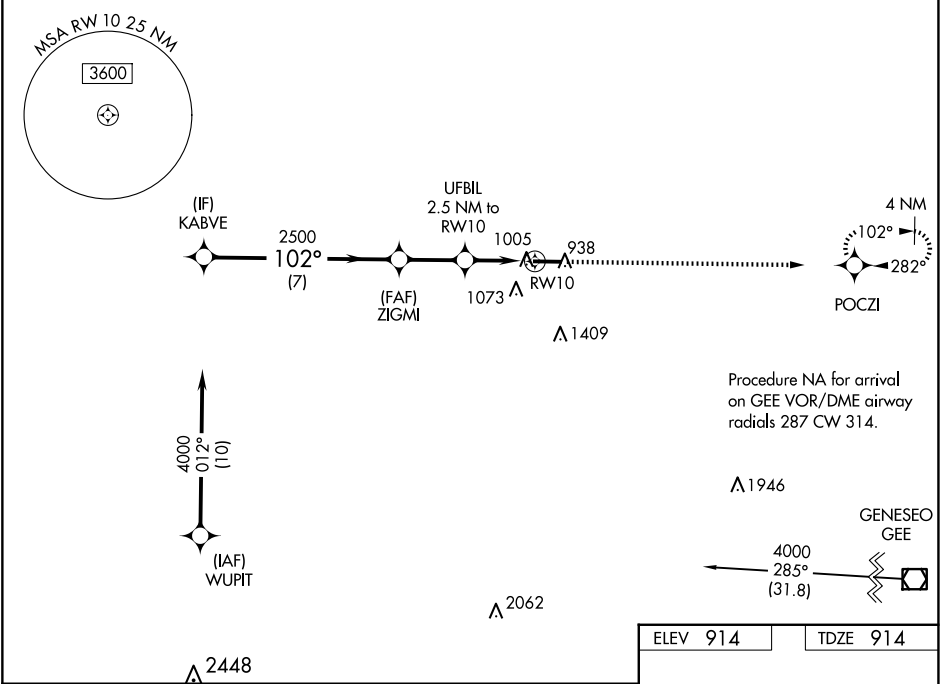


WAAS CH 82421 W10A	APP CRS 102°	Rwy Idg TDZE 914 Apt Elev 914	5499 914 914
--	------------------------	---	---

RNAV (GPS) RWY 10
GENESEE COUNTY (GVQ)

RNP APCH - GPS.			MISSED APPROACH: Climb to 3000 direct POCZI and hold.
For uncompensated Baro-VNAV systems, LNAV/VNAV NA below -16°C or above 54°C.			
AWOS-3PT 127.525	ROCHESTER APP CON 123.7 322.3	CLNC DEL 121.8	UNICOM 122.7 (CTAF) 0



NE-2, 10 JUL 2025 to 07 AUG 2025

NE-2, 10 JUL 2025 to 07 AUG 2025