


LOC I-GVQ 108.9	APP CRS 282°	Rwy Idg TDZE 911 Apt Elev 914
---------------------------	------------------------	---

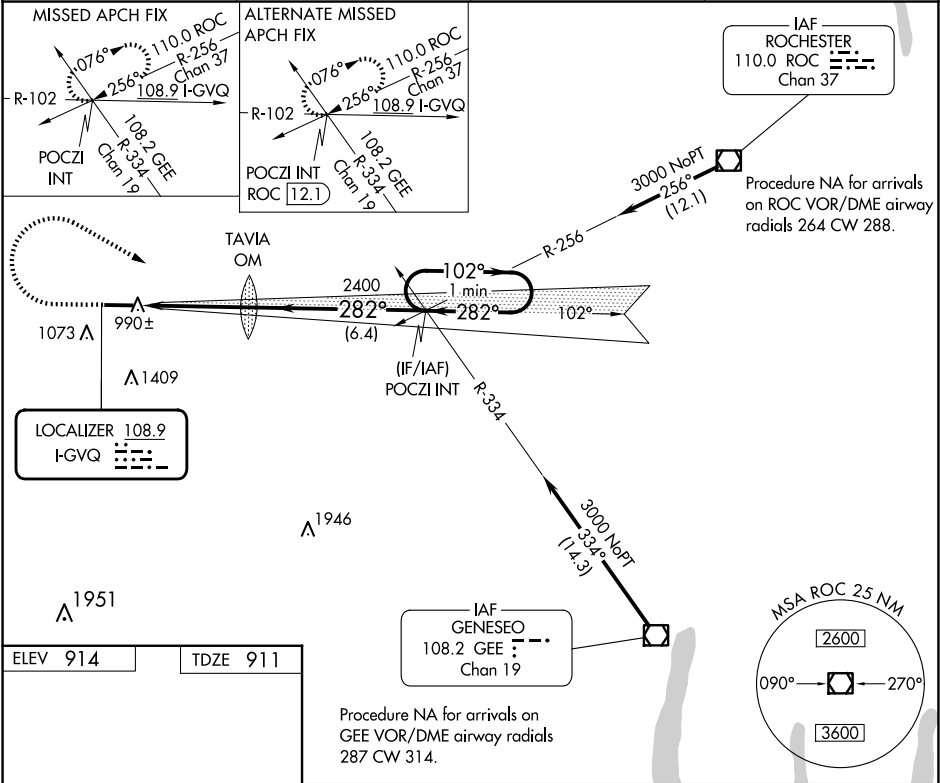
ILS or LOC RWY 28
GENESEE COUNTY (GVQ)

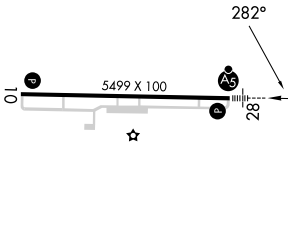
⚠ When local altimeter setting not received, use Rochester altimeter setting: increase DA to 1213 feet; increase all MDA 120 feet and visibility S-LOC 28 Cats C and D ¼ SM and Circling Cats C and D ½ SM. Autopilot coupled approach NA below 1433.

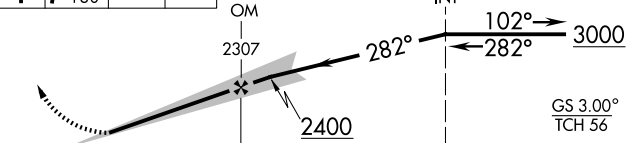
MALSR


MISSED APPROACH: Climb to 1500 then climbing right turn to 3000 via heading 130° and I-GVQ east course to POCZI INT and hold.

AWOS-3PT 127.525	ROCHESTER APP CON 123.7 322.3	CLNC DEL 121.8	UNICOM 122.7 (CTAF) 0
----------------------------	---	--------------------------	--



ELEV 914	TDZE 911
	
REIL Rwy 10 0 HIRL Rwy 10-28 0	
FAF to MAP 4.2 NM	
Knots	60 90 120 150 180
Min:Sec	4:12 2:48 2:06 1:41 1:24

1500	3000	I-GVQ	POCZI INT	VGSI and ILS glidepath not coincident (VGSI Angle 3.00/TCH 62).	One Minute Holding Pattern
hdg 130°		E crs			
		TAVIA OM	POCZI INT	GS 3.00° TCH 56	
4.2 NM		6.4 NM			
CATEGORY	A	B	C	D	
S-ILS 28	1111-½ 200 (200-½)				
S-LOC 28	1260-½ 349 (400-½)				1260-¾ 349 (400-¾)
CIRCLING	1380-1 466 (500-1)		1720-2¼ 806 (900-2¼)		1720-2½ 806 (900-2½)

NE-2, 10 JUL 2025 to 07 AUG 2025

NE-2, 10 JUL 2025 to 07 AUG 2025