

APP CRS
095°

Rwy Ldg
TDZE
1227

Apt Elev
1227

RNAV (GPS) RWY 9

HOLMES COUNTY (10G)

RNP APCH - GPS.

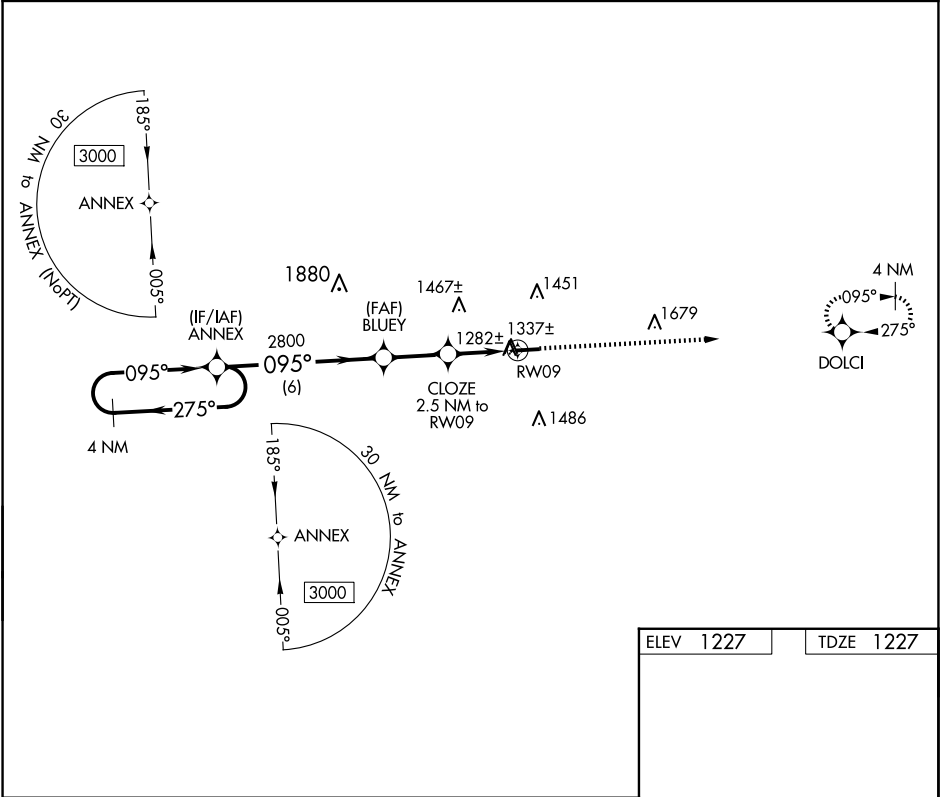
▼

▲

Rwy 9 helicopter visibility reduction below ¾ SM NA. When local altimeter setting not received, use Wayne County altimeter setting: increase all MDA 60 feet and visibility LNAV and Circling C and D ¼ SM.

MISSED APPROACH: Climb to 3000 direct DOLCI and hold.

| | | | |
|--------------------------|--|-------------------------------|----------------|
| AWOS-3 128.325 | INDIANAPOLIS CENTER 124.45 323.275 | UNICOM 123.0 (CTAF) | 123.4 0 |
|--------------------------|--|-------------------------------|----------------|



4 NM Holding Pattern ANNEX

Visual Segment - Obstacles.

3000 DOLCI

3000

275°

095°

095°

2800

BLUEY

2060

CLOZE 2.5 NM to RW09

RW09

6 NM

2.3 NM

2.5 NM

| CATEGORY | A | B | C | D |
|----------|--------------------|---|------------------------|--------------------|
| LNAV MDA | 1620-1 393 (400-1) | | 1620-1 ¾ 393 (400-1 ½) | |
| CIRCLING | 1760-1 533 (600-1) | | 1840-1 ¾ 613 (700-1 ¾) | 1860-2 633 (700-2) |

MIRL Rwy 9-27 0

REIL Rwy 9 and 27 0