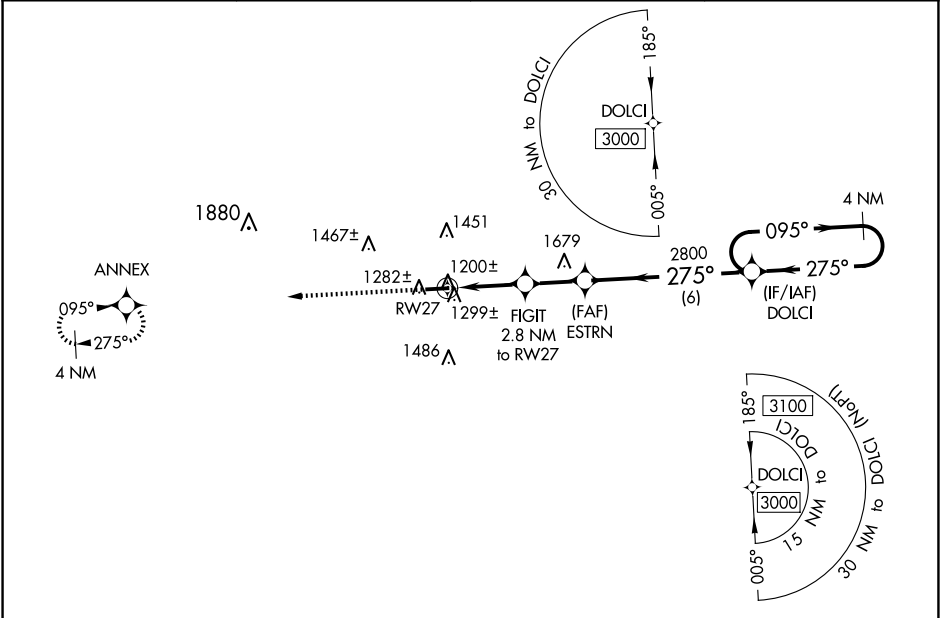


WAAS CH <b>57937</b> <b>W27A</b>	APP CRS <b>275°</b>	Rwy Ldg TDZE <b>1215</b> Apt Elev <b>1227</b>
--	------------------------	---

RNAV (GPS) RWY 27

HOLMES COUNTY (10G)

RNP APCH - GPS.		MISSED APPROACH: Climb to 3000 direct ANNEX and hold.	
AWOS-3 <b>128.325</b>	INDIANAPOLIS CENTER <b>124.45 323.275</b>	UNICOM <b>123.0 (CTAF)</b>	<b>123.4 0</b>



ELEV	1227	TDZE	1215		
<div>3000 ↑</div>		<div>ANNEX ✦</div>	<div>VGSI and descent angles not coincident (VGSI Angle 3.00/TCH 25).</div>		
<div><div>4 NM Holding Pattern</div><div>DOLCI</div><div>095° → ← 275°</div><div>3000</div><div>275°</div><div>2800</div><div>2100</div><div>ESTRN</div><div>FIGIT 2.8 NM to RW27</div><div>≤ 3.00° TCH 40</div><div>0.9 NM to RW27</div><div>0.9</div><div>1.9 NM</div><div>2.2 NM</div><div>6 NM</div></div>					
CATEGORY		A	B	C	D
LP	MDA	1480-1 265 (300-1)			
LN	MDA	1560-1 345 (400-1)			
CIRCLING		1760-1 533 (600-1)	1840-1 3/4 613 (700-1 3/4)	1860-2 633 (700-2)	
MIRL Rwy 9-27 REIL Rwys 9 and 27					

EC-2, 10 JUL 2025 to 07 AUG 2025

EC-2, 10 JUL 2025 to 07 AUG 2025