

WAAS CH 86324 W01A	APP CRS 007°	Rwy Idg 5001 TDZE 489 Apt Elev 489
--	------------------------	--

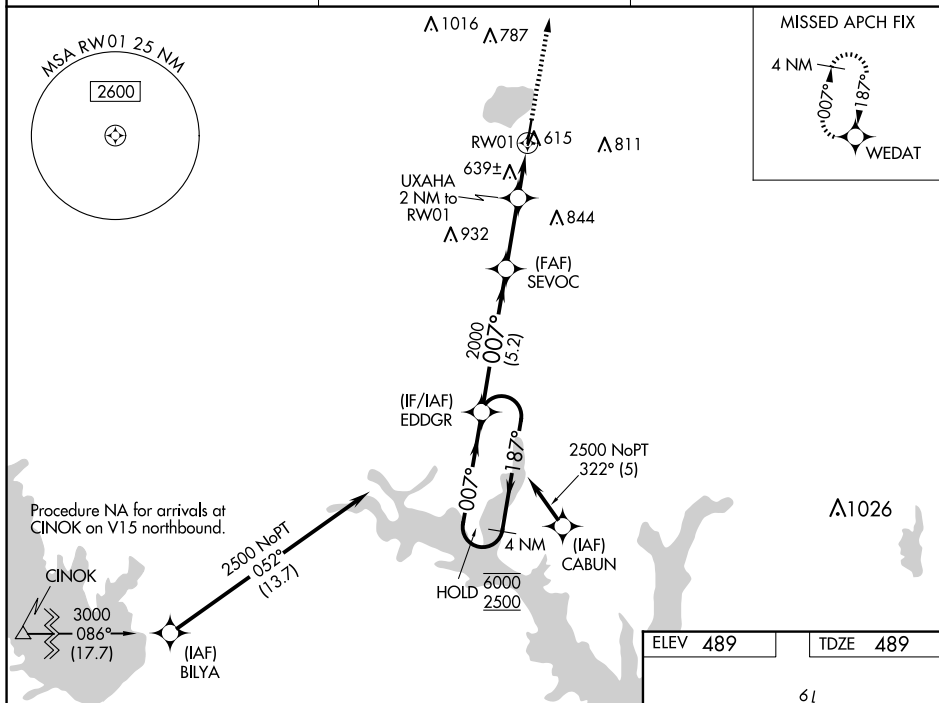
RNAV (GPS) RWY 1
SULPHUR SPRINGS MUNI (SLR)

RNP APCH-GPS.

- T** Circling NA east of Rwy 1-19. Rwy 1 helicopter visibility reduction below $\frac{3}{4}$ SM NA.
A For uncompensated Baro-VNAV systems, LNAV/VNAV NA below -15°C or above 54°C.

MISSED APPROACH: Climb to 3000 direct WEDAT and hold.

AWOS-3 118.35	FORT WORTH CENTER 132.025 360.75	UNICOM 123.075 (CTAF) 0
-------------------------	--	-----------------------------------



VORTAC

4 NM Holding Pattern

EDDGR

SEVOC 2000

UXAHA 2 NM to RW01

*1.4 NM to RW01

RW01

GP 3.00°
TCH 56

CATEGORY	A	B	C	D
LPV DA	803-1	314 (400-1)		NA
LNAV/VNAV	975-1½	486 (500-1½)		NA
LNAV MDA	1000-1	511 (600-1)	1000-1¾ 511 (600-1¾)	NA
C CIRCLING	1000-1	511 (600-1)	1000-1½ 511 (600-1½)	NA

