

ADRIAN, MICHIGAN

AL-5555 (FAA)

24305

WAAS CH 42603 W05A	APP CRS 053°	Rwy Idg TDZE Apt Elev	5001 798 802
--	------------------------	-----------------------------	---

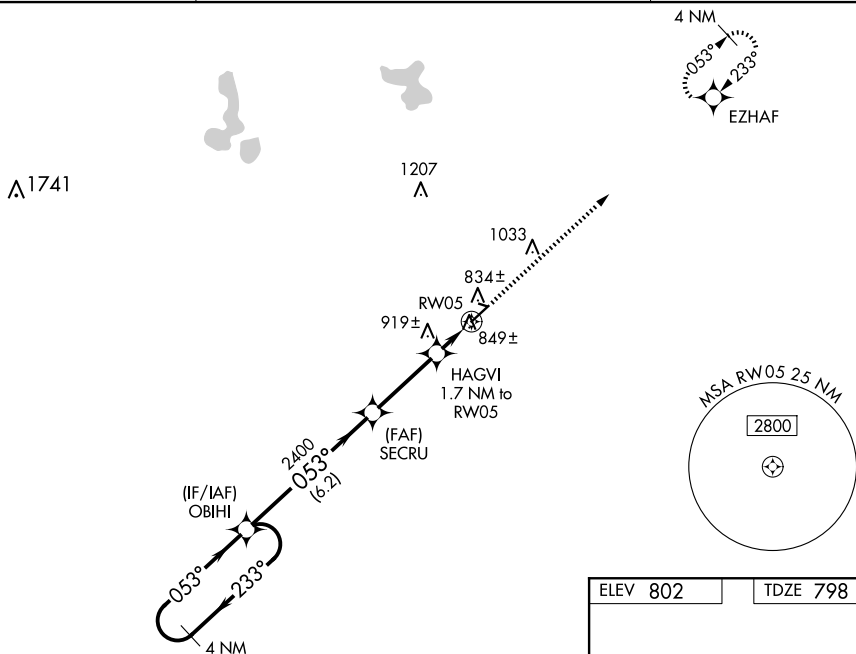
RNAV (GPS) RWY 5
LENAAWEE COUNTY (ADG)

RNP APCH - GPS.

T For uncompensated Baro-VNAV systems, LNAV/VNAV NA below -16°C or above 54°C.
A When local altimeter setting not received, use Ann Arbor Muni altimeter setting; increase LPV all Cats DA to 1114 feet and all visibilities ½ SM; increase LNAV/VNAV all Cats DA to 1185 feet; increase all MDA 80 feet and visibility LNAV Cats C/D ¼ SM. Baro-VNAV and VDP NA when using Ann Arbor Muni altimeter setting.

MISSED APPROACH:
Climb to 3000 direct
EZHAF and hold.

ASOS 118.825	TOLEDO APP CON 134.35 317.55	UNICOM 122.8 (CTAF) 0
------------------------	--	---------------------------------



4 NM Holding Pattern

3000 ← 233°
053° →

GP 3.00°
TCH 47

OBIHI

SECUR 2400

HAGVI 1.7 NM to RW05

*1380

*1.2 NM to RW05

RW05

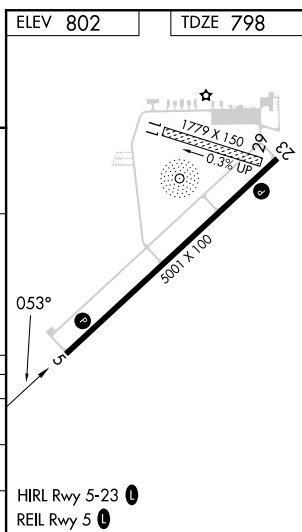
VGS1 and RNAV glidepath not coincident (VGS1 Angle 3.00/TCH 32).

3000

EZHAF

*RNAV only.

CATEGORY		A		B		C		D	
LPV	DA	1048- $\frac{3}{4}$ 250 (300- $\frac{3}{4}$)							
LNAV/ VNAV	DA	1119-1 $\frac{1}{4}$ 321 (400-1 $\frac{1}{4}$)							
LNAV	MDA	1200-1 402 (500-1)				1200-1 $\frac{1}{4}$ 402 (500-1 $\frac{1}{4}$)			



ADRIAN, MICHIGAN
Amdt 1D 19MAY22

41°52'N-84°05'W

LENAWEE COUNTY (ADG)
RNAV (GPS) RWY 5

EC-1, 10 JUL 2025 to 07 AUG 2025