

APP CRS
233°

Rwy Idg
TDZE
798

Apt Elev
802

RNAV (GPS) RWY 23

LENAWEE COUNTY (ADG)

RNP APCH - GPS

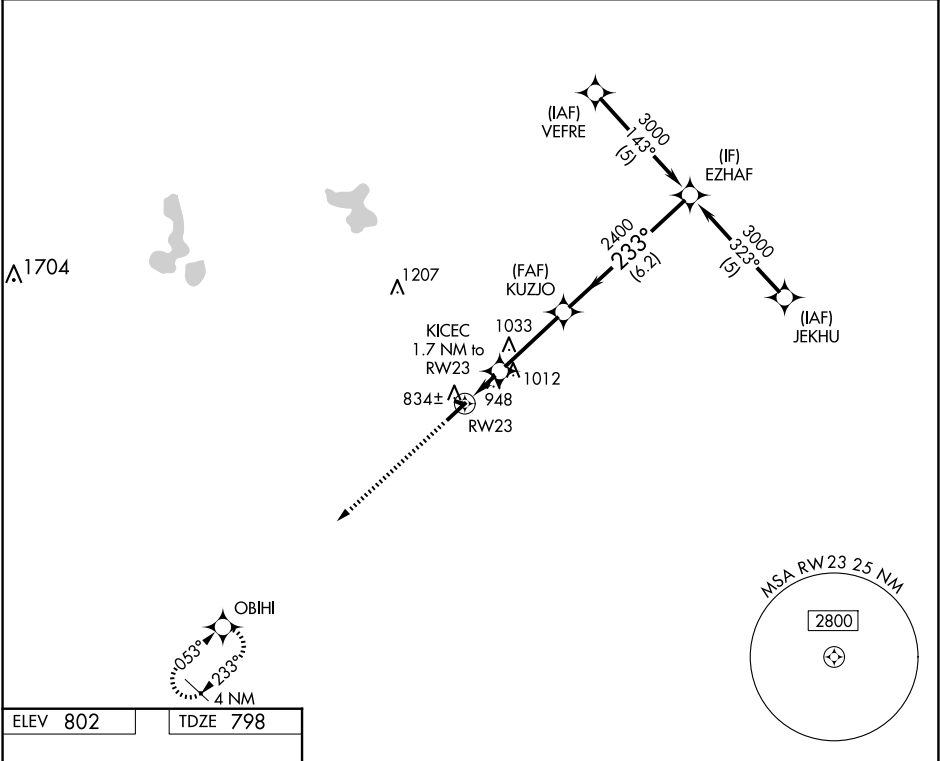
▼

⚠

Rwy 23 helicopter visibility reduction below ¾ SM NA. When local altimeter setting not received, use Ann Arbor Muni altimeter setting: increase all MDA 80 feet and visibility LNAV Cats C/D and Circling Cats C/D ¼ SM. Circling NA to Rwys 11 and 29.

MISSED APPROACH: Climb to 3000 direct OBIHI and hold.

ASOS 118.825	TOLEDO APP CON 134.35 317.55	UNICOM 122.8 (CTAF) 0
-----------------	---------------------------------	--------------------------



ELEV 802

TDZE 798

3000

OBIHI

VGSI and descent angles not coincident (VGSI Angle 3.00/TCH 32).

RW23

KUZJO

EZHAF

1779 X 150

5001 X 100

0.3% UP

233°

1380

2400

3000

1.7 NM

3.1 NM

6.2 NM

CATEGORY	A	B	C	D
LNAV MDA	1260-1	462 (500-1)	1260-1½ 462 (500-1½)	1260-1½ 462 (500-1½)
CIRCLING	1300-1 498 (500-1)	1320-1 518 (600-1)	1340-1½ 538 (600-1½)	1440-2 638 (700-2)

HIRL Rwy 5-23 0

REIL Rwy 5 0