

|  |                        |   |
|--|------------------------|---|
| WAAS<br>CH <b>70343</b><br><b>W33A</b> | APP CRS<br><b>327°</b> | Rwy Ldg <b>3634</b><br>TDZE <b>893</b><br>Apt Elev <b>894</b> |
|--|------------------------|---|

# RNAV (GPS) RWY 33

## HARRY CLEVER FLD (PHD)

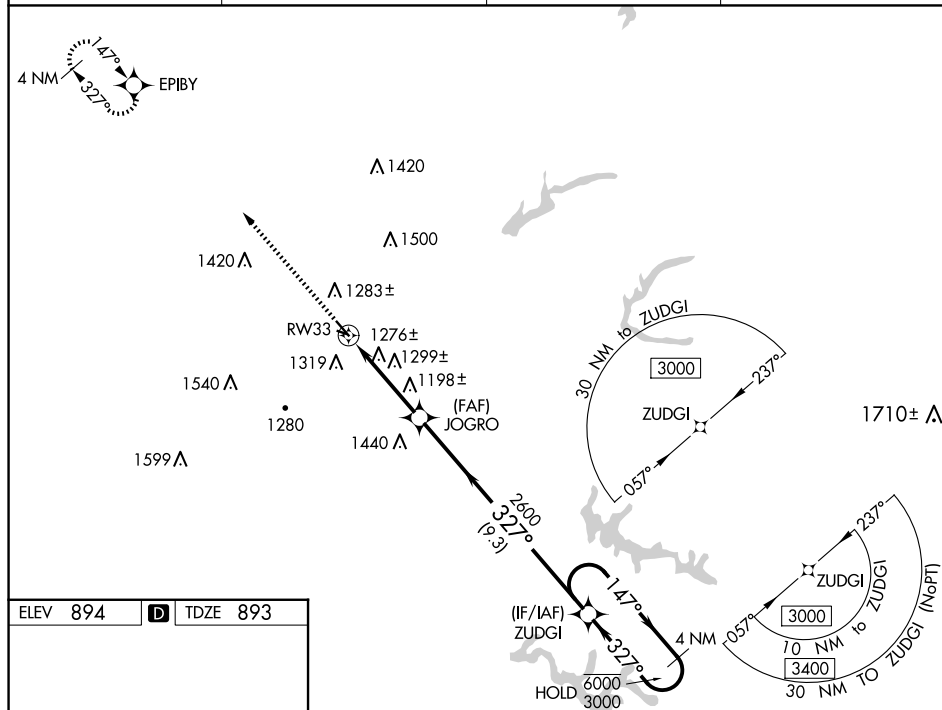
RNP APCH.



Circling NA to Rwy 12 and 30.  
Rwy 33 helicopter visibility reduction below 1 SM NA.  
Procedure NA at night.

MISSED APPROACH: Climb to 3000  
direct EPIBY and hold.

|                        |  |                               |  |
|------------------------|--|-------------------------------|--|
| ASOS<br><b>121.425</b> | CLEVELAND APP CON★<br><b>125.5 371.875</b> | UNICOM<br><b>122.8</b> (CTAF) | <b>123.3</b>  |
|------------------------|--|-------------------------------|--|



3000 EPIBY

327° 30'

327°

147°

327°

4.00°

TCH 54

2600

3.9 NM

9.3 NM

4 NM Holding Pattern

ZUDGI

JOGRO

RW33

1907 X 70

33

33° 30'

REIL Rwy 15 and 33

MIRL Rwy 15-33

NEW PHILADELPHIA, OHIO  
Orig 13SEP18

40°28'N-81°25'W

HARRY CLEVER FLD (PHD)  
RNAV (GPS) RWY 33

EC-2, 10 JUL 2025 to 07 AUG 2025