

WAAS CH 99332 W35A	APP CRS 346°	Rwy Ldg TDZE Apt Elev	5318 4729 4734
--	------------------------	-----------------------------	---

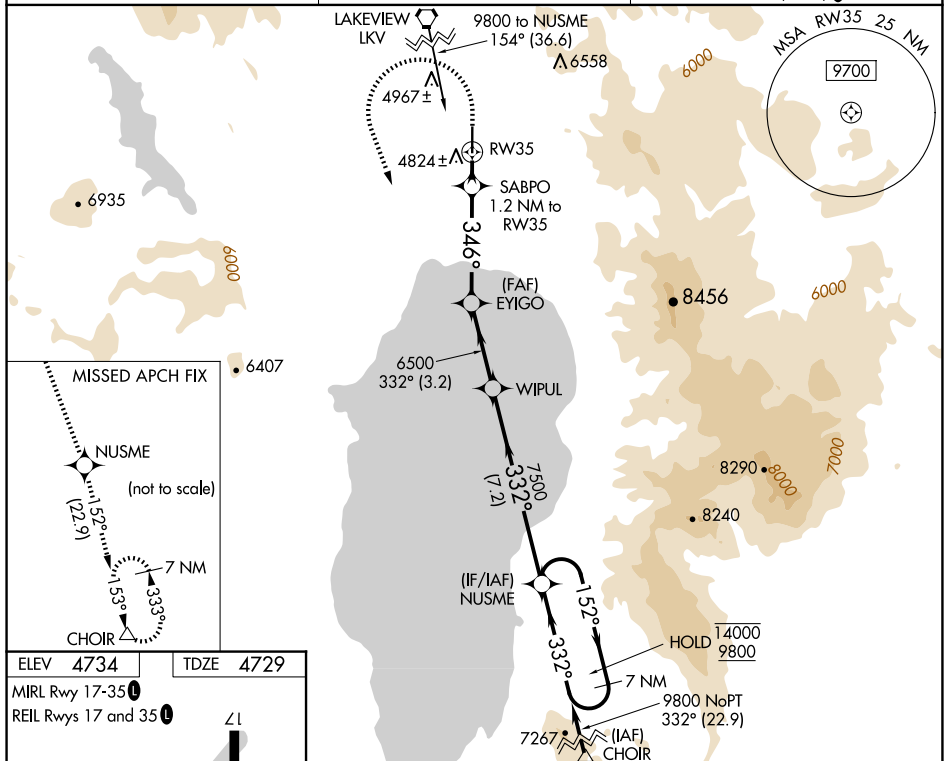
RNAV (GPS) RWY 35
LAKE COUNTY (LKV)

RNP APCH.



MISSED APPROACH: (Do not exceed 235K until NUSME) Climb to 5200 then climbing left turn to 11000 direct NUSME and on track 152° to CHOIR and hold.

AWOS-3PT 135.525	SEATTLE CENTER 127.6 346.35	UNICOM 122.8 (CTAF) 0
----------------------------	---------------------------------------	---------------------------------



5200 ↑	11000 	NUSME 	tr 152° △	CHOIR		NUSME	7 NM Holding Pattern	14000 9800
* LNAV only	SABPO 1.2 NM to RW35	EYIGO 6500	WIPUL	332°	7500	152° →	← 332°	
RW35	5160*	6500						GP 3.00° TCH 45
1.2 NM	4.2 NM	3.2 NM	7.2 NM					
CATEGORY	A	B	C	D				
LPV DA	4979-1				250 (300-1)			
LNAV/VNAV DA	5121-1½				392 (400-1½)			
LNAV MDA	5080-1				351 (400-1)			
C CIRCLING	5160-1 426 (500-1)	5220-1 486 (500-1)	5320-2 586 (600-2)	5480-2½ 746 (800-2½)				