

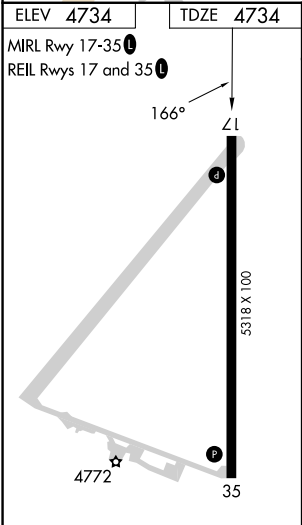
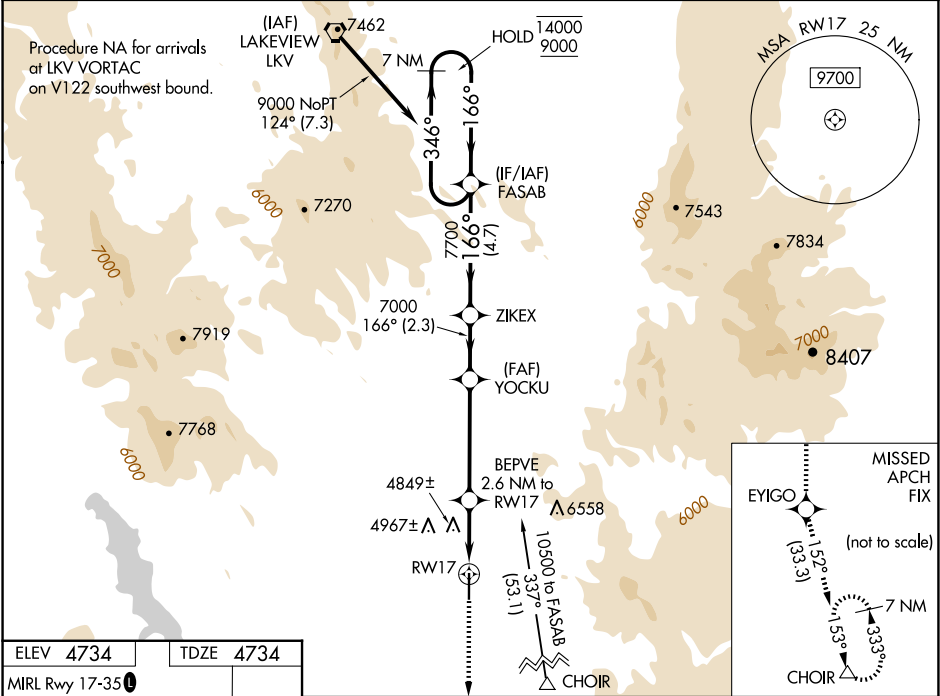
WAAS CH <b>93532</b> <b>W17A</b>	APP CRS <b>166°</b>	Rwy Ldg TDZE Apt Elev <b>5318</b> <b>4734</b> <b>4734</b>
--	------------------------	---

RNAV (GPS) RWY 17

LAKE COUNTY (LKV)

RNP APCH.	<div><div><div></div><div></div><div></div></div><div>Circling NA east of Rwy 17-35. For uncompensated Baro-VNAV systems, LNAV/VNAV NA below -24°C or above 50°C.</div><div>-26°C</div></div>	MISSED APPROACH: Climb to 11000 direct EYIGO and on track 152° to CHOIR and hold.
-----------	---	---

AWOS-3PT <b>135.525</b>	SEATTLE CENTER <b>127.6 346.35</b>	UNICOM <b>122.8 (CTAF) 0</b>
----------------------------	---------------------------------------	---------------------------------



11000	EYIGO	tr 152°	CHOIR	FASAB	7 NM Holding Pattern
*LNAV only.	BEPVE 2.6 NM to RW17	YOCKU 7000	ZIKEX 7700	346° → 14000	← 166° 9000
*1 NM to RW17	5620*	7000			GP 3.00° TCH 45
1 NM	1.6 NM	4.3 NM	2.3 NM	4.7 NM	
CATEGORY	A	B	C	D	
LPV DA	4984-1	250 (300-1)			
LNAV/VNAV DA	5139-1½	405 (500-1½)			
LNAV MDA	5100-1	366 (400-1)			
CIRCLING	5160-1 426 (500-1)	5220-1 486 (500-1)	5460-2 726 (800-2)	5500-2½ 766 (800-2½)	