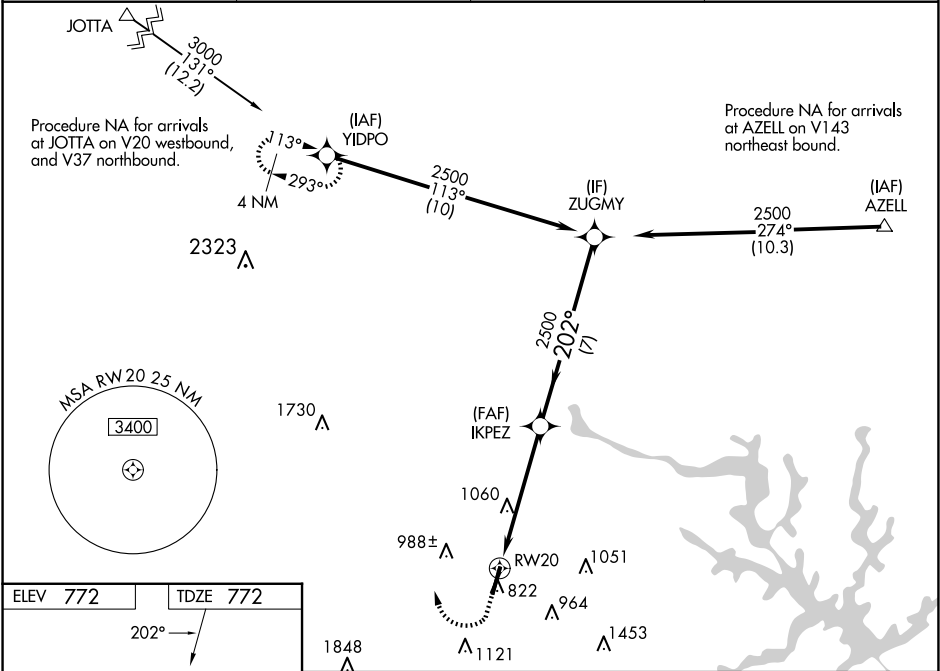


WAAS CH 42521 W20A	APP CRS 202°	Rwy Idg TDZE 772 Apt Elev 772	RNAV (GPS) RWY 20 MID-CAROLINA RGNL (RUQ)	
For uncompensated Baro-VNAV systems, LNAV/VNAV NA below -16° C (4°F) or above 39°C (102°F). DME/DME RNP-0.3 NA. When local altimeter setting not received, use Lexington altimeter setting and increase all DA 37 feet and all MDA 40 feet, increase LNAV Cat C and D visibility ½ SM and Circling Cat C visibility ½ SM and Circling Cat D ¼ SM. For inop ALS when using Lexington altimeter setting, increase LNAV Cat C and D visibility to 1¾ SM. VDP and Baro-VNAV NA when using Lexington altimeter setting. For inop ALS, increase LNAV/VNAV visibility to ¾ SM all Cats.			MALSR	MISSED APPROACH: Climb to 2100 then climbing right turn to 3400 direct YIDPO and hold.
AWOS-3 118.175	CHARLOTTE APP CON 128.325 307.8	CLNC DEL 127.35	UNICOM 122.725 (CTAF)	



ELEV 772	TDZE 772
*LNAV only.	
*1.7 NM to RWY 20	
1.7 NM 3.6 NM 7 NM	
CATEGORY	A B C D
LPV DA	972-½ 200 (200-½)
LNAV/VNAV DA	1032-½ 260 (300-½)
LNAV MDA	1360-½ 588 (600-½) 1360-1¼ 588 (600-1¼)
CIRCLING	1360-1 588 (600-1) 1440-1¾ 668 (700-1¾) 1440-2 668 (700-2)