

WAAS
CH **40321**
W02A

APP CRS
022°

Rwy Ldg
TDZE **772**
Apt Elev **772**

RNAV (GPS) RWY 2

MID-CAROLINA RGNL (RUQ)

RNP APCH - GPS.

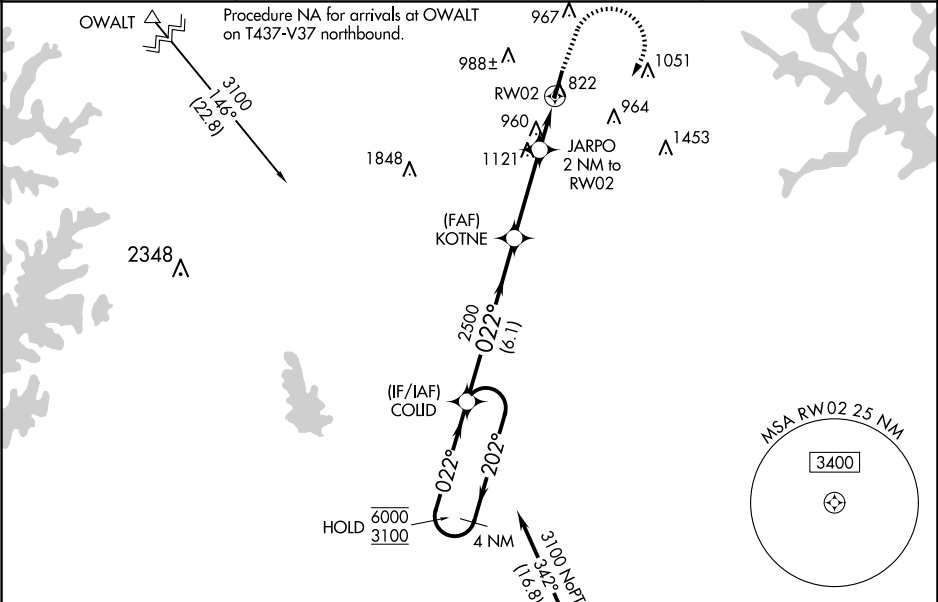
▼

▲

Rwy 2 helicopter visibility reduction below ¾ SM NA.
For uncompensated Baro-VNAV systems, LNAV/VNAV NA below -16°C or above 54°C.

MISSED APPROACH:
Climb to 1500 then
climbing right turn to
3100 direct COLID
and hold.

AWOS-3 118.175	CHARLOTTE APP CON 128.325 307.8	CLNC DEL 127.35	UNICOM 122.725 (CTAF) 0
--------------------------	---	---------------------------	-----------------------------------



Procedure NA for arrivals at LOCAS on V409/T398 eastbound and V409 southwest bound.

ELEV 772

TDZE 772

VGSI and RNAV glidepath not coincident (VGSI Angle 3.00/TCH 34).

4 NM Holding Pattern

GP 3.00° TCH 55

COLID

1500

3100

COLID

6000

3100

202°

022°

022°

2500

1460

6.1 NM

3.3 NM

0.7

1.3

KOTNE

JARPO 2 NM to RW02

1.3 NM to RW02

RW02

CATEGORY	A	B	C	D
LPV DA	1138-1 366 (400-1)			
LNAV/VNAV DA	1181-1½ 409 (500-1½)			
LNAV MDA	1220-1 448 (500-1)	1220-1¾ 448 (500-1¾)		
CIRCLING	1240-1 468 (500-1)	1260-1 488 (500-1)	1440-1¾ 668 (700-1¾)	1440-2 668 (700-2)

