

LOM RU	APP CRS	Rwy Idg	5501
275	202°	TDZE	772
		Apt Elev	772

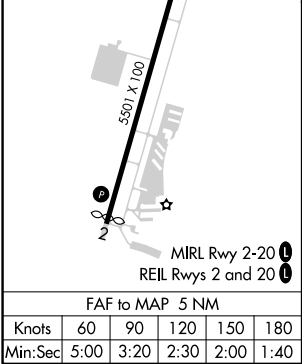
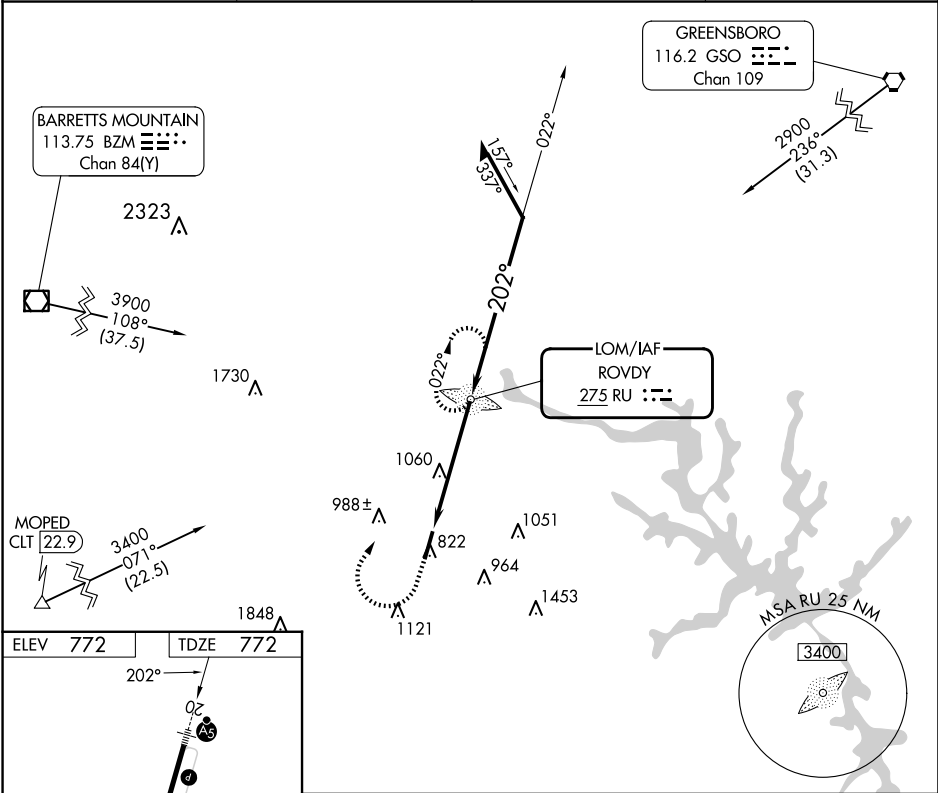
NDB RWY 20
MID-CAROLINA RGNL (RUQ)

When local altimeter setting not received, use Lexington altimeter setting and increase all MDA 40 feet, increase S-20 Cats C and D, and Circling Cat C visibility ½ SM and Circling Cat D ¼ SM. For inop ALS, increase Cat D visibility to 1 7⁄8 SM. For inop ALS when using Lexington altimeter setting increase Cat D visibility to 2 SM.



MISSED APPROACH: Climb to 1800 then climbing right turn to 2500 direct ROVDY LOM and hold.

AWOS-3 118.175	CHARLOTTE APP CON 128.325 307.8	CLNC DEL 127.35	UNICOM 122.725 (CTAF) 0
-------------------	------------------------------------	--------------------	----------------------------



1800	2500	RU	ROVDY RU LOM	6000	022°	Remain within 10 NM
				2500	202°	
					3.20° TCH 39	
					5 NM	
CATEGORY	A	B	C	D		
S-20	1420-3⁄4	648 (700-3⁄4)	1420-1 3⁄8	648 (700-1 3⁄8)		
CIRCLING	1420-1	648 (700-1)	1440-1 7⁄8	668 (700-1 7⁄8)	1440-2	668 (700-2)