

KNIGHTS THREE DEPARTURE

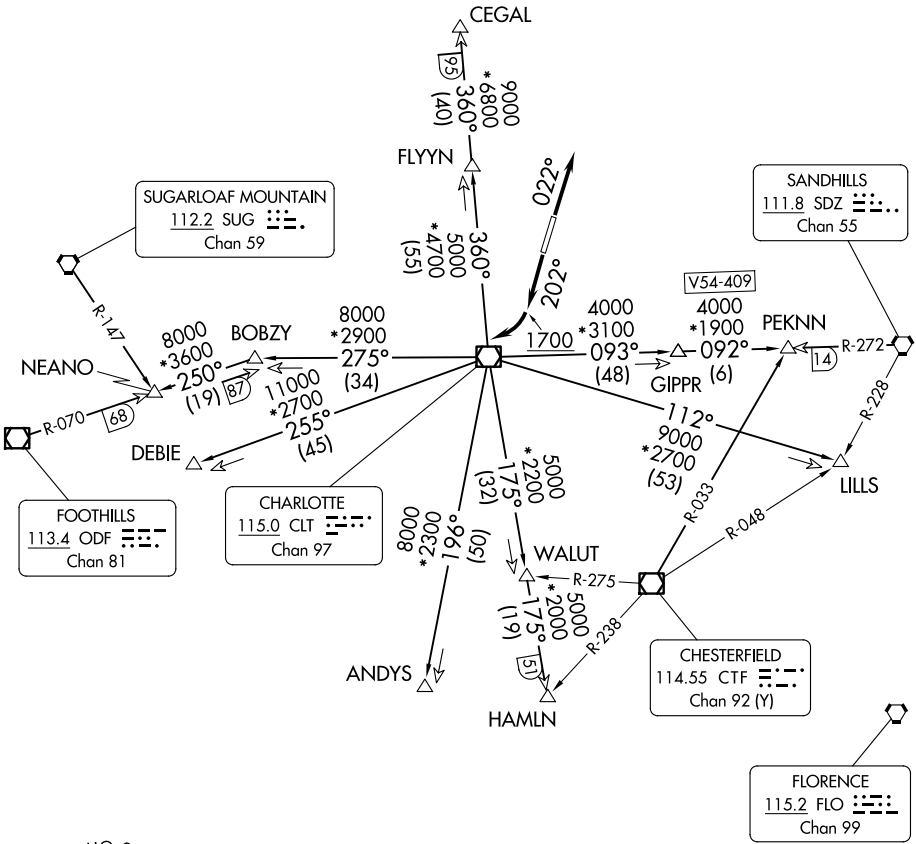
CHARLOTTE DEP CON  
128.325 307.8  
AWOS-3  
118.175  
CLNC DEL  
127.35  
UNICOM (CTAF)  
122.725

TOP ALTITUDE:  
3000

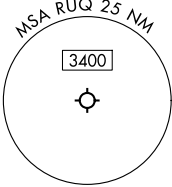
RADAR and DME required.

TAKEOFF MINIMUMS

Rwy 2: Standard.  
Rwy 20: 400-2¾ or standard with minimum climb of 205' per NM to 1300,  
or alternatively, with standard takeoff minimums and a normal 200' per NM  
climb gradient, takeoff must occur no later than 1200' prior to DER.



NOTE: For propeller aircraft only.  
NOTE: Turboprops: Operate in a manner that will  
result in best forward speed and climb rate.  
NOTE: Transponder code will be issued via  
Charlotte clearance delivery.



(CONTINUED ON FOLLOWING PAGE)

NOTE: Chart not to scale.

KNIGHTS THREE DEPARTURE