

SE-2, 10 JUL 2025 to 07 AUG 2025

CHARLOTTE DEP CON
128.325 307.8
AWOS-3
118.175
CLNC DEL
127.35
UNICOM
122.725

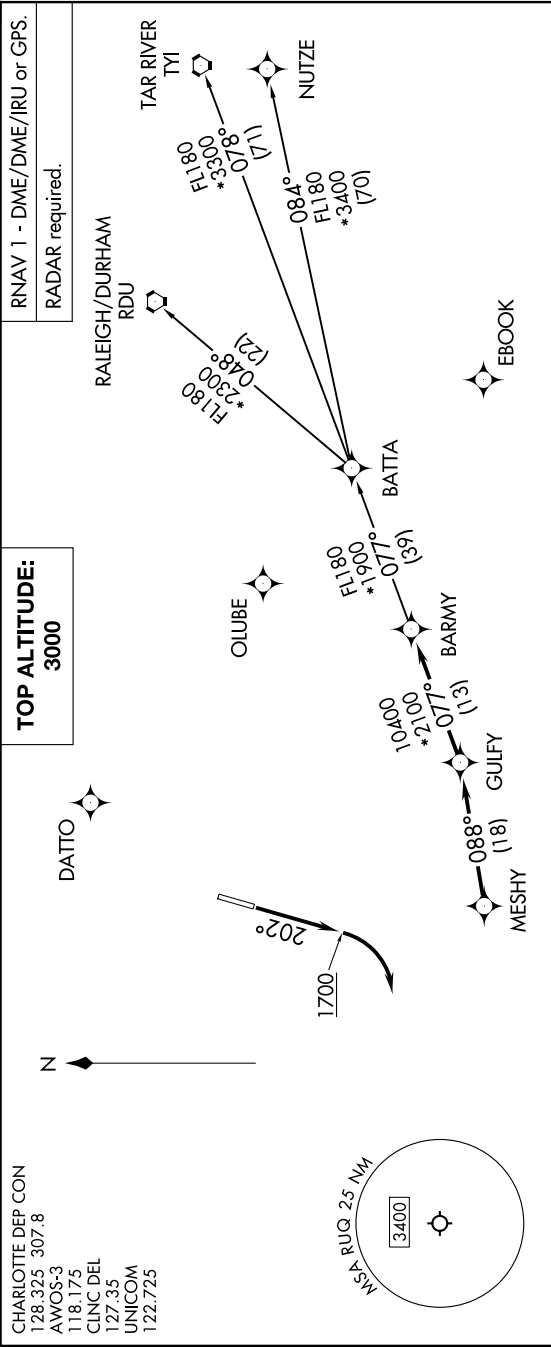
TOP ALTITUDE:
3000

RNAV 1 - DME/DME/IRU or GPS.
RADAR required.

BARMY FIVE DEPARTURE (RNAV)

(BARMY5.BARMY) 24081 AL-5551 (FAA)

MID-CAROLINA RGNL (RUQ)
SALISBURY, NORTH CAROLINA



DEPARTURE ROUTE DESCRIPTION

TAKEOFF RUNWAY 2: Climb on heading assigned by ATC, thence. . . .

TAKEOFF RUNWAY 20: Climb on heading 202° to 1700 before turning right, then on heading assigned by ATC, thence. . . .

. . . on RADAR vectors to MESHY, then on depicted route to BARMY. Then on assigned transition. Maintain 3000, expect clearance to filed altitude within 10 minutes after departure.

NUTZE TRANSITION (BARMY5.NUTZE)
RALEIGH/DURHAM TRANSITION (BARMY5.RDU)
TAR RIVER TRANSITION (BARMY5.TYI)

TAKEOFF MINIMUMS
Rwy 2: Standard.
Rwy 20: 400-2¼ or standard with minimum climb of 205' per NM to 1300, or alternatively, with standard takeoff minimums and a normal 200' per NM climb gradient, takeoff must occur no later than 1200' prior to DER.

NOTE: For turbo jets only.
NOTE: If unable to accept climb rates, advise ATC on initial contact.
NOTE: Transponder code will be issued via PDC or Charlotte CLNC DEL.
NOTE: Upon reaching 10000 MSL, accelerate to and maintain 280K, if unable advise ATC.

NOTE: Chart not to scale.

BARMY FIVE DEPARTURE (RNAV)
(BARMY5.BARMY) 21MAR24

SALISBURY, NORTH CAROLINA
MID-CAROLINA RGNL (RUQ)

SE-2, 10 JUL 2025 to 07 AUG 2025