

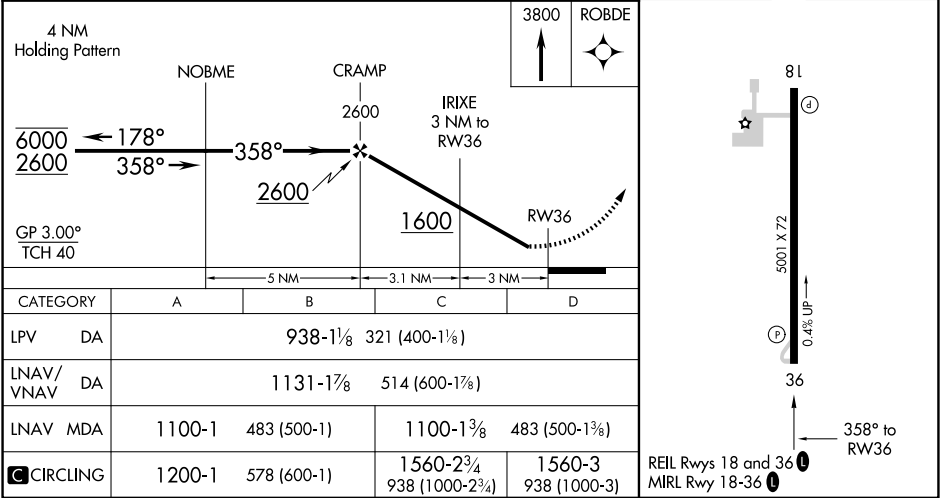
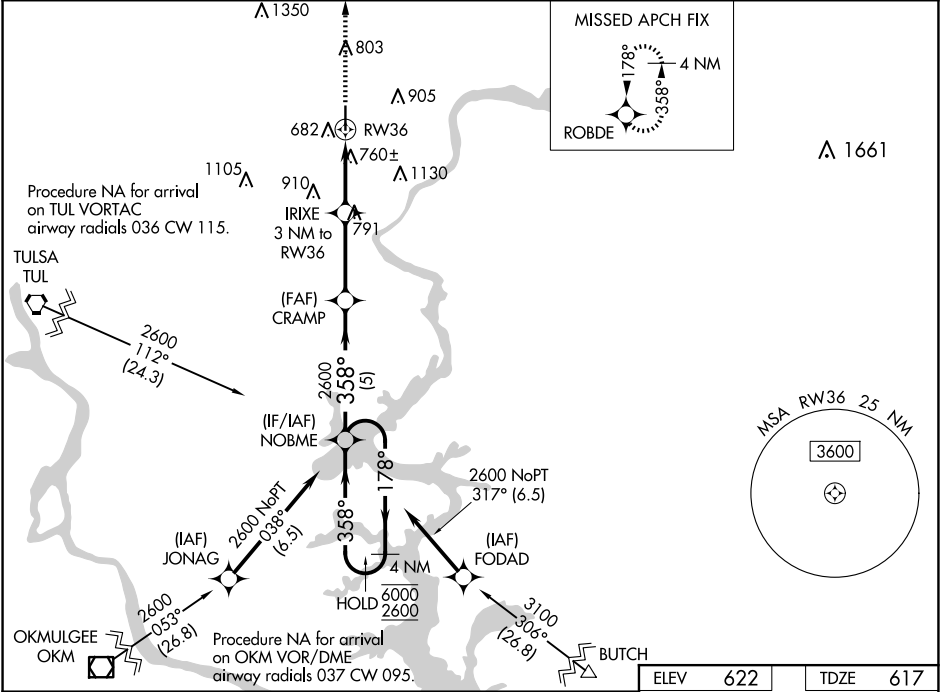
WAAS CH <b>70340</b> <b>W36A</b>	APP CRS <b>358°</b>	Rwy Idg TDZE Apt Elev	<b>5001</b> <b>617</b> <b>622</b>
--	------------------------	-----------------------------	---

RNAV (GPS) RWY 36

MID-AMERICA INDUSTRIAL (H71)

RNP APCH - GPS.	MISSED APPROACH: Climb to 3800 direct ROBDE and hold, continue climb-in-hold to 3800.
<div><div></div><div>Rwy 36 helicopter visibility reduction below 1 SM NA. For uncompensated Baro-VNAV systems, LNAV/VNAV NA below -16°C or above 54°C. Procedure NA at night.</div></div>	

AWOS 3-PT <b>120.1</b>	TUL ASOS <b>124.9 377.2</b>	TULSA APP CON <b>119.1 360.825</b>	UNICOM <b>122.8 (CTAF) ①</b>
---------------------------	--------------------------------	---------------------------------------	---------------------------------



SC-1, 10 JUL 2025 to 07 AUG 2025

SC-1, 10 JUL 2025 to 07 AUG 2025