

PRYOR, OKLAHOMA

AL-5550 (FAA)

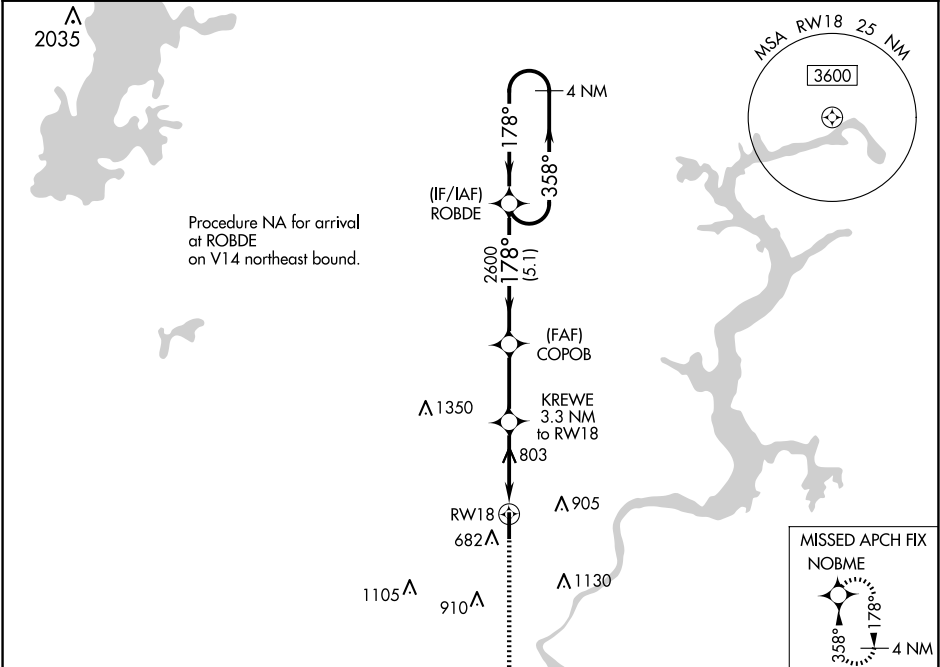
22195

WAAS CH <b>93938</b> <b>W18A</b>	APP CRS <b>178°</b>	Rwy Idg TDZE <b>622</b> Apt Elev <b>622</b>
--	------------------------	---

RNAV (GPS) RWY 18

MID-AMERICA INDUSTRIAL (H71)

RNP APCH - GPS.		MISSED APPROACH: Climb to 2600 direct NOBME and hold.	
<div><div></div><div>NA</div></div>	Circling Rwy 36 NA at night. For uncompensated Baro-VNAV systems, LNAV/VNAV NA below -16°C or above 54°C.	AWOS 3-PT <b>120.1</b>	TUL ASOS <b>124.9 377.2</b>
		TULSA APP CON <b>119.1 360.825</b>	UNICOM <b>122.8 (CTAF) 0</b>



4 NM Holding Pattern		ROBDE	COPOB	KREWE 3.3 NM to RW18	1.5 NM to RW18	RW18
2600 ← 358°		178° →	2600	*1700	2600	NOBME
GP 3.00°		TCH 40	5.1 NM	2.8 NM	1.8	1.5
CATEGORY		A	B	C	D	
LPV DA		943-1 $\frac{1}{8}$	321 (400-1 $\frac{1}{8}$ )		NA	
LNAV/VNAV DA		1108-1 $\frac{5}{8}$	486 (500-1 $\frac{5}{8}$ )		NA	
LNAV MDA		1140-1	518 (600-1)	1140-1 $\frac{3}{8}$ 518 (600-1 $\frac{3}{8}$ )	NA	
CIRCLING		1200-1	578 (600-1)	1560-2 $\frac{3}{4}$ 938 (1000-2 $\frac{3}{4}$ )	NA	

ELEV 622

TDZE 622

178° to RW18

81

5001 X 72

0.4% UP

36

MIRL Rwy 18-36 0

REIL Rwy 18 and 36 0

PRYOR, OKLAHOMA

Orig-A 14JUL22

36°14'N-95°20'W

MID-AMERICA INDUSTRIAL (H71)

RNAV (GPS) RWY 18