

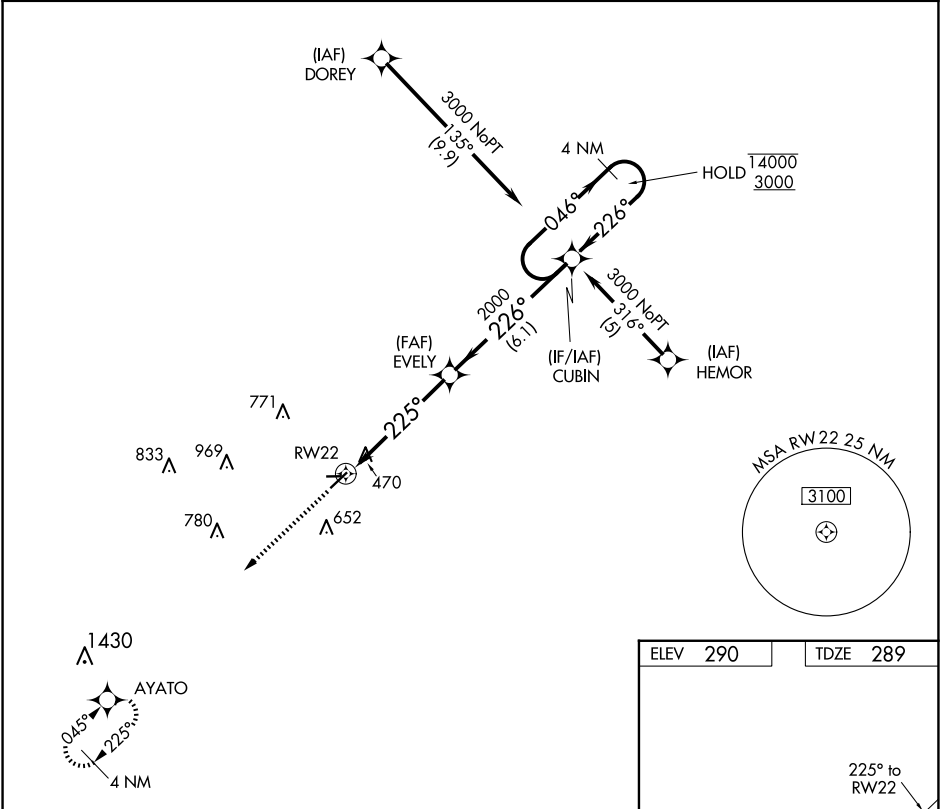
RNP APCH - GPS


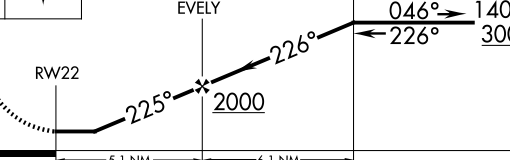

NA

Circling NA to Rwy 8 and 26. Rwy 22 helicopter visibility reduction below ¼ SM NA. Use Jonesboro altimeter setting; when not received, use Walnut Ridge altimeter setting and increase all MDA 20 feet.

MISSED APPROACH: Climb to 2500 direct AYATO and hold.

JBR ASOS 118.525	MEMPHIS CENTER 120.075 289.4	UNICOM 122.8 (CTAF) 0
---------------------	---------------------------------	--------------------------



2500 ↑	AYATO 	Visual Segment - Obstacles.			
		RW22	EVELY	CUBIN	4 NM Holding Pattern
		225°	226°	046°	14000 3000
		5.1 NM	6.1 NM		
CATEGORY	A	B	C	D	
LNAV MDA	820-1¼	531 (600-1¼)	NA		
 CIRCLING	860-1¼ 570 (600-1¼)	1000-1¼ 710 (800-1¼)	NA		

