

APP CRS
216°

Rwy Idg
TDZE
Apt Elev

3900
833
833

RNAV (GPS) RWY 21

TRI-CITIES (CZG)

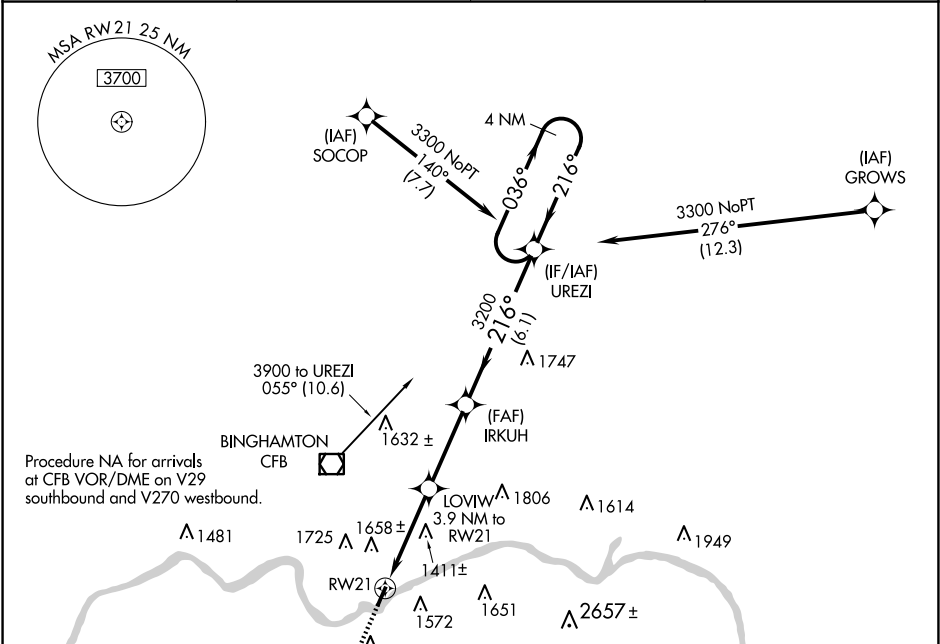
NA

-17°C

DME/DME RNP-0.3 NA.
Procedure NA at night.
Rwy 21 helicopter visibility reduction below 1 SM NA.

MISSED APPROACH: Climb to 3400 direct HEPVO and hold.

| | | | |
|-------------------|---------------------------------------|-------------------|--------------------------|
| AWOS-3 119.075 | BINGHAMTON APP CON ★ 118.6 257.625 | CLNC DEL 121.7 | UNICOM 122.8 (CTAF) 0 |
|-------------------|---------------------------------------|-------------------|--------------------------|



MISSED APCH FIX
HEPVO

036° 216° 4 NM

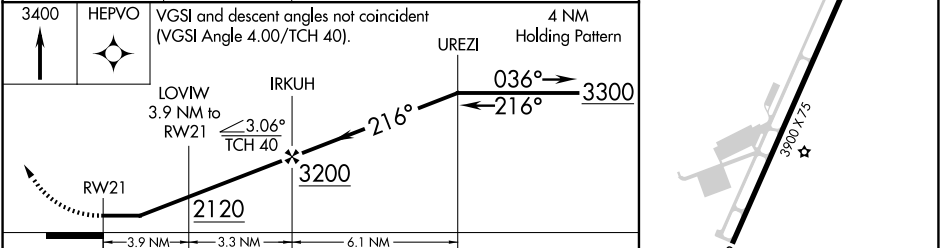
ELEV 833

TDZE 833

3400 HEPVO

VGSI and descent angles not coincident (VGSI Angle 4.00/TCH 40).

4 NM Holding Pattern



| CATEGORY | A | B | C | D |
|-----------|------------------------|------------------------|----|---|
| LNNAV MDA | 1780-1¼ 947 (1000-1¼) | | NA | |
| CIRCLING | 1940-1¼ 1107 (1200-1¼) | 2020-1½ 1187 (1200-1½) | NA | |

REIL Rwys 3 and 21 0

MIRL Rwy 3-21 0