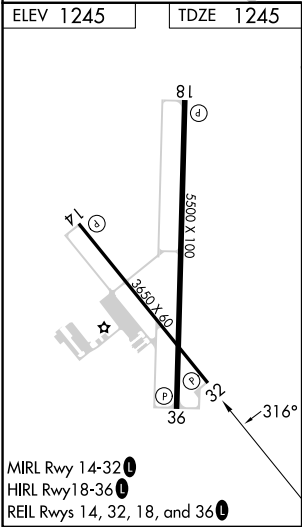
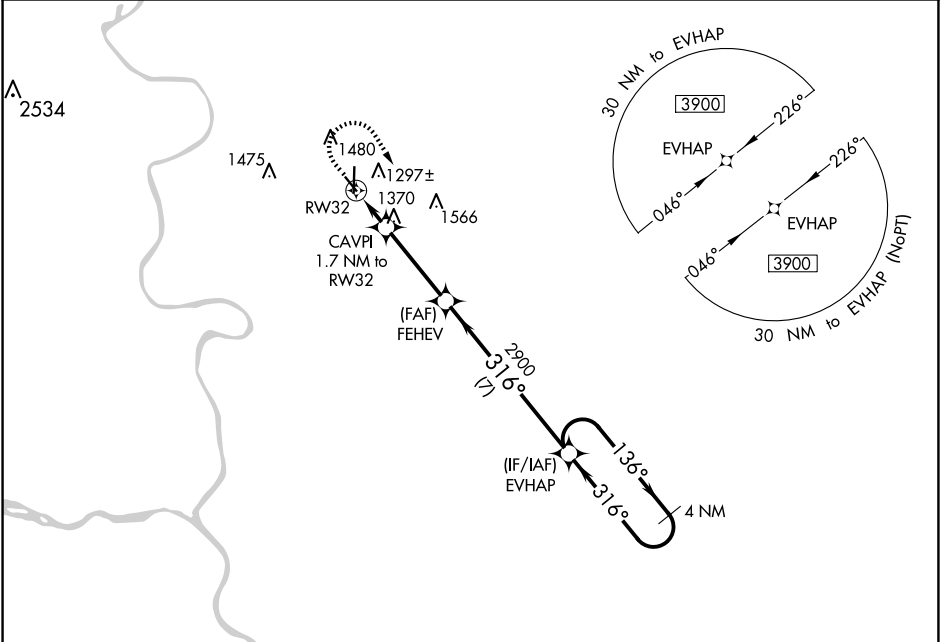


WAAS CH <b>90441</b> <b>W32A</b>	APP CRS <b>316°</b>	Rwy Idg TDZE Apt Elev	<b>3650</b> <b>1245</b> <b>1245</b>
--	------------------------	-----------------------------	---

RNAV (GPS) RWY 32  
COUNCIL BLUFFS MUNI (CBF)

<p><b>▼</b> For uncompensated Baro-VNAV systems, LNAV/VNAV NA below -18°C (0°F) or above 54°C (130°F). DME/DME RNP- 0.3 NA.</p>	MISSED APPROACH: Climb to 2000 then climbing right turn to 3900 direct EVHAP and hold.
---	--

AWOS-3 <b>126.575</b>	OMAHA APP CON <b>124.5 263.0</b>	CLNC DEL <b>127.675</b>	UNICOM <b>122.725 (CTAF) ①</b>
--------------------------	-------------------------------------	----------------------------	-----------------------------------



2000	3900	EVHAP	VGSI and RNAV glidepath not coincident (VGSI Angle 3.50/TCH 30). 4 NM Holding Pattern	
*LNAV only	CAVPI 1.7 NM to RW32	FEHEV	EVHAP	
	*0.9 NM to RW32	2900	136°	3900
		1820*	316°	
		2900	316°	
			GP 3.00°	
			TCH 40	
CATEGORY	A	B	C	D
LPV DA	1445-¾		200 (200-¾)	
LNAV/VNAV DA	1495-¾		250 (300-¾)	
LNAV MDA	1620-1		375 (400-1)	
<b>☑</b> CIRCLING	1780-1	535 (600-1)	1780-1½ 535 (600-1½)	1880-2 635 (700-2)