

WAAS CH 42806 W18A	APP CRS 177°	Rwy Idg TDZE Apt Elev	5500 1241 1245
----------------------------------------	------------------------	-----------------------------	-------------------------------------------

RNAV (GPS) RWY 18

COUNCIL BLUFFS MUNI (CBF')

RNP APCH.

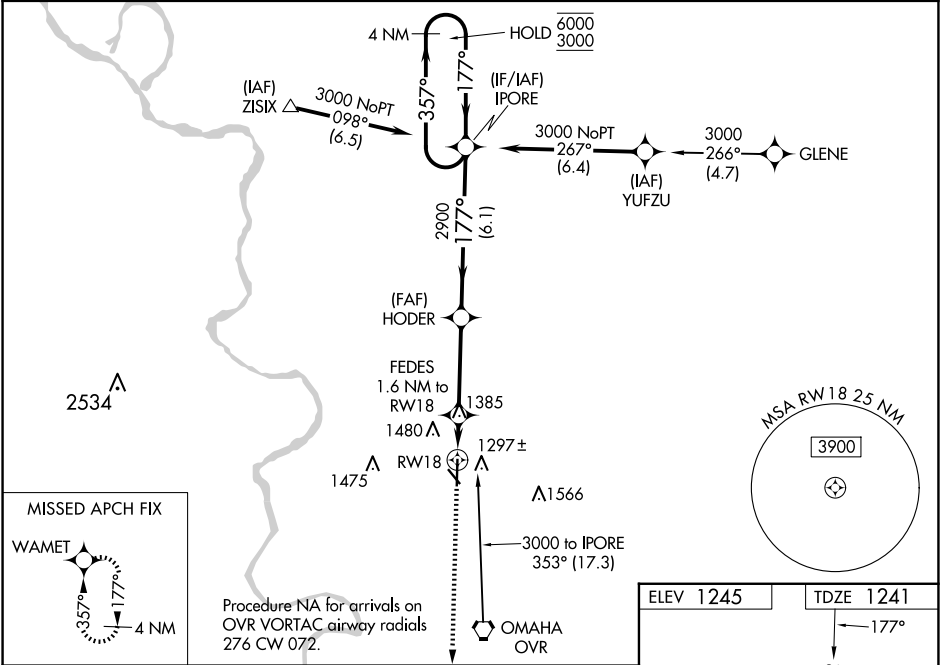
▼

⚠

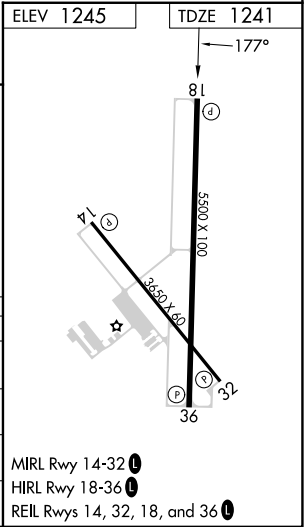
Baro-VNAV NA when using Eppley Airfield altimeter setting. For uncompensated Baro-VNAV systems, LNAV/VNAV NA below -17°C or above 54°C. When local altimeter setting not received, use Eppley Airfield altimeter setting and increase LPV DA to 1544 feet, LNAV/VNAV DA to 1750 feet and all MDA 60 feet and increase LPV all Cats visibility ¼ SM, LNAV Cat C and D and Circling Cat C and D visibility ¼ SM.

MISSED APPROACH: Climb to 3000 direct WAMET and hold.

AWOS-3 126.575	OMAHA APP CON 124.5 263.0	CLNC DEL 127.675	UNICOM 122.725 (CTAF) 0
--------------------------	-------------------------------------	----------------------------	------------------------------------------



3000	WAMET	HODER	IPORE	4 NM Holding Pattern
*LNAV only	FEDES 1.6 NM to RWY18	2900	2900	357° → 6000 ← 177° 3000
RWY18		1780*	GP 3.00° TCH 45	
1.6 NM		3.5 NM	6.1 NM	
CATEGORY	A	B	C	D
LPV DA	1491-¾ 250 (300-¾)			
LNAV/VNAV DA	1697-1⅜ 456 (500-1⅝)			
LNAV MDA	1640-1 399 (400-1)	1640-1⅛ 399 (400-1⅞)		
CIRCLING	1780-1 535 (600-1)	1840-1 595 (600-1)	1840-1½ 595 (600-1½)	1880-2 635 (700-2)



NC-3, 10 JUL 2025 to 07 AUG 2025

NC-3, 10 JUL 2025 to 07 AUG 2025