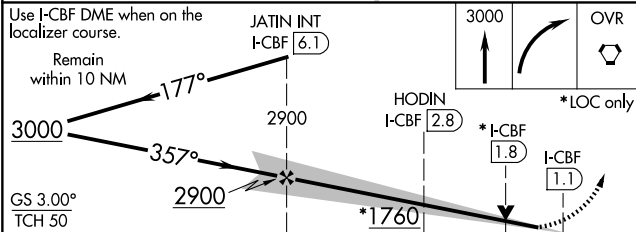
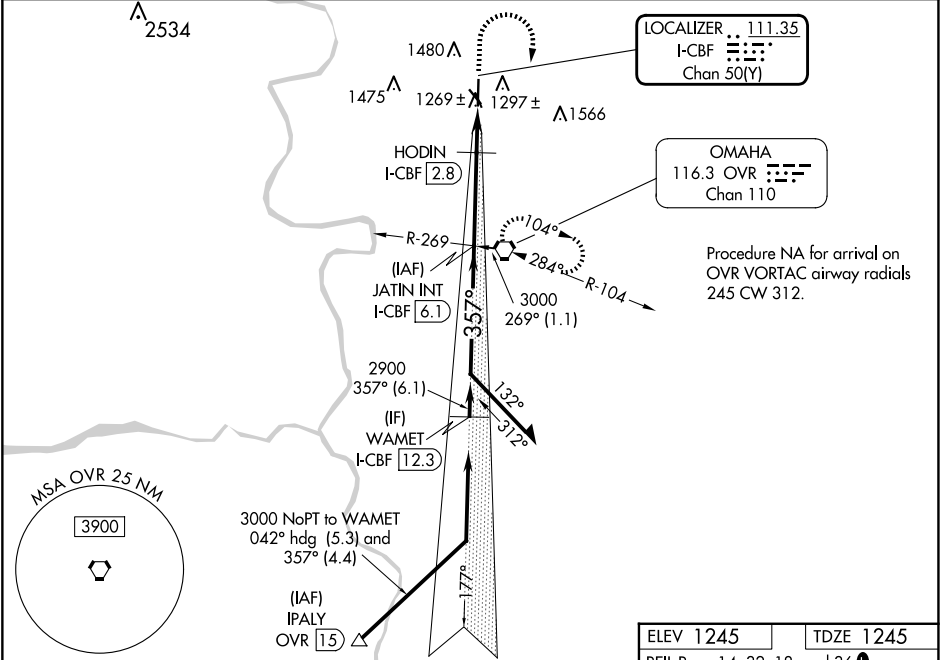


| | | | |
|---|------------------------|---|---|
| LOC/DME I-CBF 111.35 Chan 50(Y) | APP CRS 357° | Rwy Idg TDZE 1245 Apt Elev 1245 | ILS or LOC RWY 36 COUNCIL BLUFFS MUNI (CBF') |
|---|------------------------|---|---|

| |
|---|
| <div>VDP NA with Eppley Airfield altimeter setting. When local altimeter setting not received, use Eppley Airfield altimeter setting and increase S-ILS 36 DA to 1498 feet, and all MDA 60 feet and increase S-LOC 36 Cats C and D and Circling Cat C and D visibility ¼ SM. HODIN fix minimums: increase Circling Cat C and D visibility ¼ SM.</div> <div>MISSED APPROACH: Climb to 3000 then right turn direct OVR VORTAC and hold.</div> |
|---|

| | | | |
|--------------------------|-------------------------------------|----------------------------|--|
| AWOS-3 126.575 | OMAHA APP CON 124.5 263.0 | CLNC DEL 127.675 | UNICOM 122.725 (CTAF) 1 |
|--------------------------|-------------------------------------|----------------------------|--|



| CATEGORY | A | B | C | D |
|--------------------|-----------------------|-----------------------|-------------------------|-----------------------|
| S-ILS 36 | | 1445-¾ | 200 (200-¾) | |
| S-LOC 36 | 1760-1 | 515 (600-1) | 1760-1⅓ | 515 (600-1⅓) |
| CIRCLING | 1780-1 535 (600-1) | 1840-1 595 (600-1) | 1840-1½ 595 (600-1½) | 1880-2 635 (700-2) |
| HODIN FIX MINIMUMS | | | | |
| S-LOC 36 | | 1520-1 | 275 (300-1) | |
| CIRCLING | 1780-1 535 (600-1) | 1840-1 595 (600-1) | 1840-1½ 595 (600-1½) | 1880-2 635 (700-2) |

