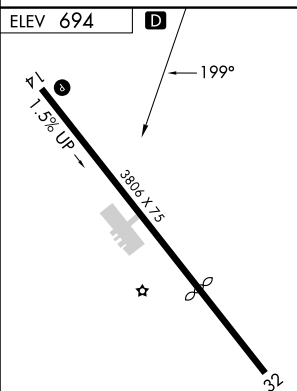
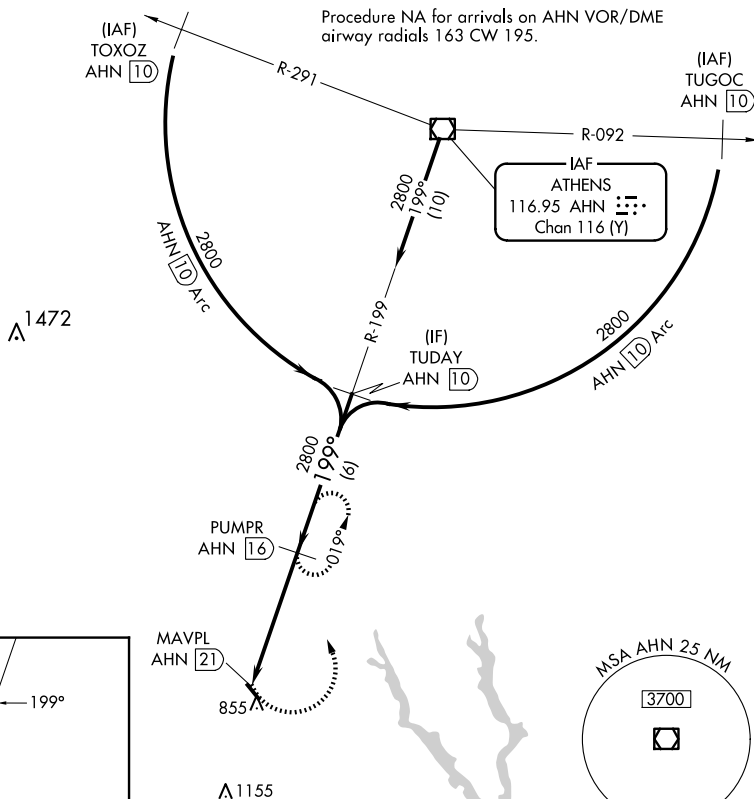


VOR/DME-A
MADISON MUNI (52A)

Procedure NA at night.
Use Athens altimeter setting.
Visibility reduction by helicopters NA.

MISSED APPROACH: Climbing left turn to 2800 on AHN
VOR/DME R-199 to PUMPR/AHN 16 DME and hold.

UNICOM
122.8 (CTAF) **L**



2800

AHN R-199

PUMPR AHN 16

Procedure Turn NA

MAVPL AHN 21

PUMPR AHN 16

TODAY AHN 10

199°

2800

2800

5 NM

6 NM

CATEGORY	A	B	C	D
CIRCLING	1220-1 526 (600-1)	1220-1¼ 526 (600-1¼)	1380-2 686 (700-2)	NA