

WAAS CH 56219 W35A	APP CRS 350°	Rwy Idg TDZE 78 Apt Elev 82	6016
--	------------------------	---	-------------

RNAV (GPS) RWY 35

SUGAR LAND RGNL (SGR)

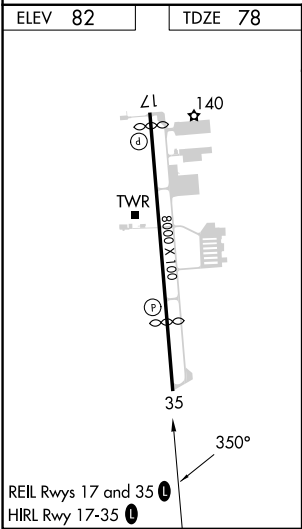
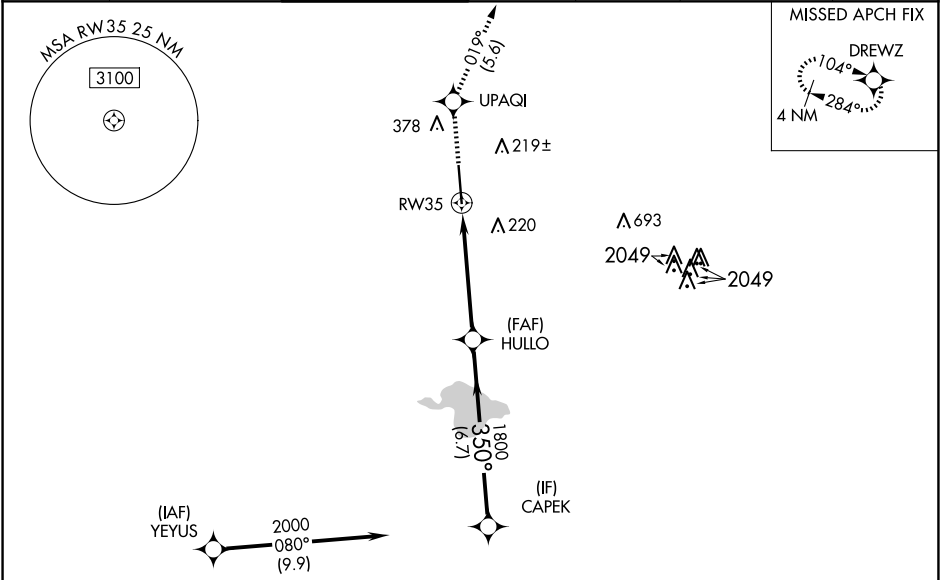
RNP APCH.

⚠

For uncompensated Baro-VNAV systems, LNAV/VNAV NA below -15°C (5°F) or above 43°C (109°F).
Baro-VNAV and VDP NA when using William P Hobby altimeter setting. When local altimeter setting not received, use William P Hobby altimeter setting: increase all DA 51 feet; increase all MDA 60 feet and increase LNAV-VNAV all Cats visibility to 1¾, LNAV Cat C/D visibility to 1½, and Circling Cat C visibility to 2, Cat D to 2¼. When VGSI inop, Circling Rwy 17 NA at night.

MISSED APPROACH:
Climb to 2000 direct UPAQI and on track 019° to DREWZ and hold.

ATIS 118.125	HOUSTON APP CON 123.8 257.7	SUGAR LAND TOWER★ 118.65 (CTAF) 0	GND CON 121.4	CLNC DEL 121.4	CLNC DEL 119.25 (when twr closed)	UNICOM 122.95
------------------------	---------------------------------------	---	-------------------------	--------------------------	--	-------------------------



RADAR REQUIRED				
ELEV 82	TDZE 78	2000	UPAQI	DREWZ
* LNAV only.				
* 1.7 NM to RW35				
RW35				
HULLO 1800				
CAPEK 2000				
GP 3.00° TCH 56				
1.7 3.5 NM 6.7 NM				
CATEGORY	A	B	C	D
LPV DA	278-¾ 200 (200-¾)			
LNAV/VNAV DA	567-1½ 489 (500-1½)			
LNAV MDA	660-1	582 (600-1)	660-1¾	582 (600-1¾)
CIRCLING	720-1	638 (700-1)	720-1¾ 638 (700-1¾)	720-2 638 (700-2)

SC-5, 10 JUL 2025 to 07 AUG 2025

SC-5, 10 JUL 2025 to 07 AUG 2025