

TOP ALTITUDE:  
ASSIGNED BY ATC

NOTE: RNAV 1.

NOTE: RADAR required.

NOTE: ATC assigned only.

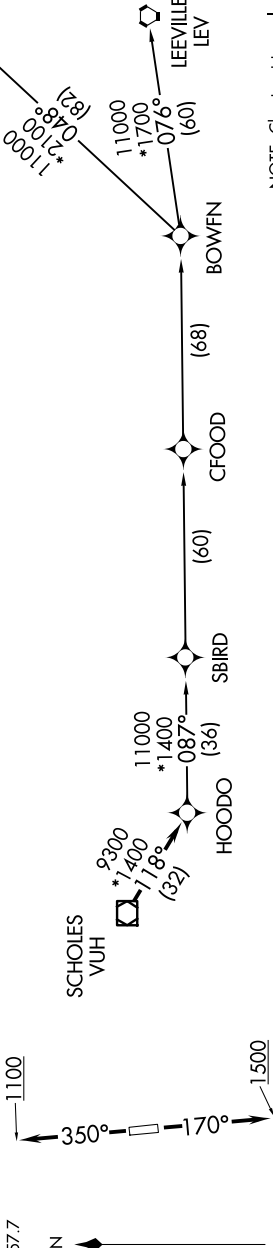
NOTE: DME/DME/IRU or GPS required.

NOTE: For non-GPS equipped aircraft, LCH, ILLA, TBD, and LEV DME's must be operational.

TAKEOFF MINIMUMS

Rwys 17, 35: Standard with minimum climb of 500' per NM to 600.

ATIS  
118.125  
CLNC DEL  
121.4  
CLNC DEL  
119.25 (when twr closed)  
GND CON  
121.4  
SUGARLAND TOWER ★  
118.65 (CTAF)  
HOUSTON DEP CON  
123.8 257.7



NOTE: Chart not to scale.

DEPARTURE ROUTE DESCRIPTION

TAKEOFF RUNWAY 17: Climb on heading 170° to 1500, for RADAR vectors to VUH VOR/DME, thence . . .

TAKEOFF RUNWAY 35: Climb on heading 350° to 1100, for RADAR vectors to VUH VOR/DME, thence . . .

. . . on track 118° to HOODO, then on (transition). Maintain ATC assigned altitude.  
Expect filed altitude 10 minutes after departure.

- BOWFN TRANSITION (HOODO7.BOWFN)
- CFOOD TRANSITION (HOODO7.CFOOD)
- HARVEY TRANSITION (HOODO7.HRV)
- LEVILLIE TRANSITION (HOODO7.LEV)
- SBIRD TRANSITION (HOODO7.SBIRD)