


WAAS CH 97439 W27A	APP CRS 273°	Rwy Idg 4649 TDZE 879 Apt Elev 884
--	------------------------	---

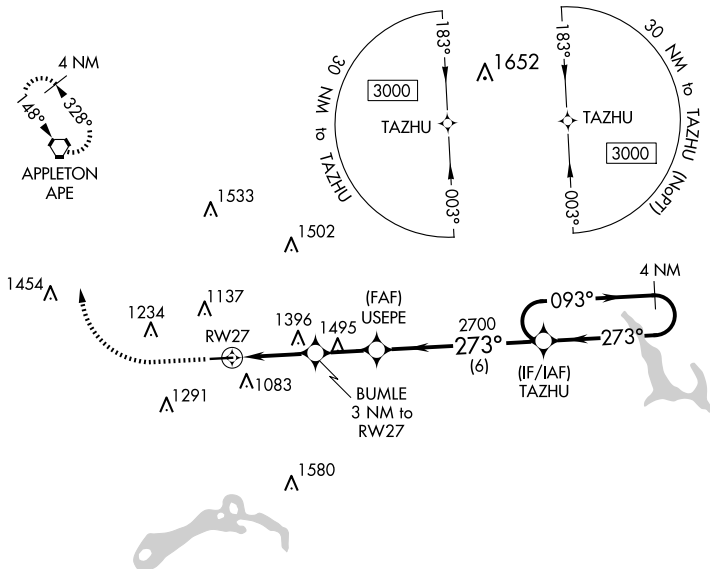
RNAV (GPS) RWY 27
LICKING COUNTY RGNL (VTA)

TA

Circling Rwy 9 NA at night. Rwy 27 helicopter visibility reduction below $\frac{3}{4}$ SM NA. DME/DME RNP-0.3 NA.

MISSED APPROACH: Climb to 2000 then climbing right turn to 3000 direct APE VORTAC and hold.

ASOS 121.125	COLUMBUS APP CON 125.95 317.775	CLNC DEL 125.175	UNICOM 122.7 (CTAF)	123.3 
------------------------	---	----------------------------	-------------------------------	--



ELEV 884		TDZE 879
----------	--	----------

