

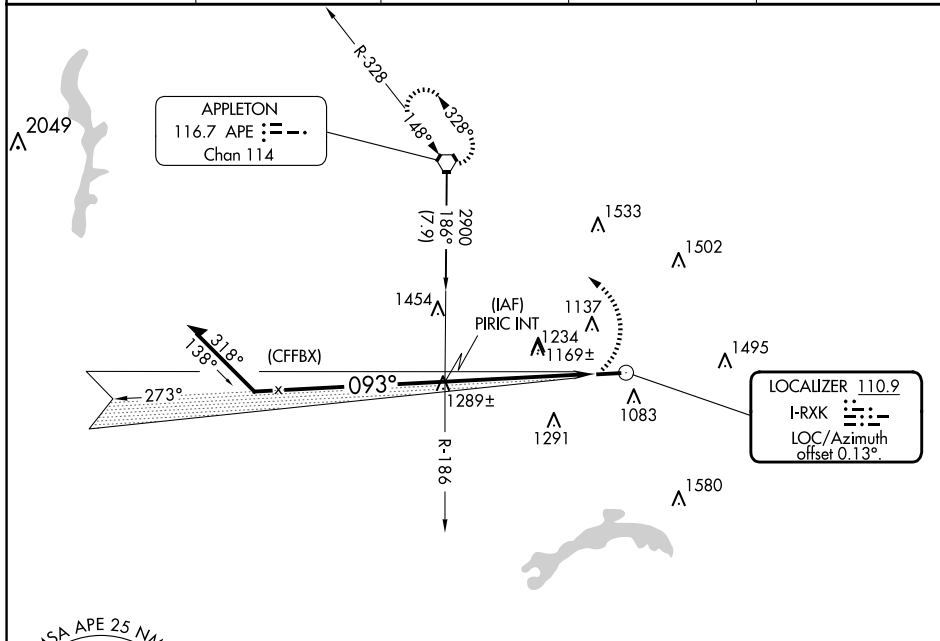
LOC I-RXK <u>110.9</u>	APP CRS 093°	Rwy Idg 4192 TDZE 884 Apt Elev 884
----------------------------------	------------------------	---

LOC RWY 9
LICKING COUNTY RGNL (VTA)

T Rwy 9 helicopter visibility reduction below 1 SM NA. Straight-in and
A NA Circling Rwy 9 NA at night.

MISSED APPROACH: Climbing left turn to 2900 direct APE VORTAC and hold.

ASOS 121.125	COLUMBUS APP CON 125.95 317.775	CLNC DEL 125.175	UNICOM 122.7 (CTAF)	123.3
------------------------	---	----------------------------	-------------------------------	--



Remain within 10 NM

2900

273°

PRIC INT

093°

2700

3.00° TCH 40

5.6 NM

VGS and descent angles not coincident (VGS Angle 3.00/TCH 41).

2900

APE

CATEGORY	A	B	C	D
S-9	1420-1	536 (600-1)	1420-1½	536 (600-1½)
C CIRCLING	1480-1	596 (600-1)	1760-2½ 876 (900-2½)	1760-2¾ 876 (900-2¾)