

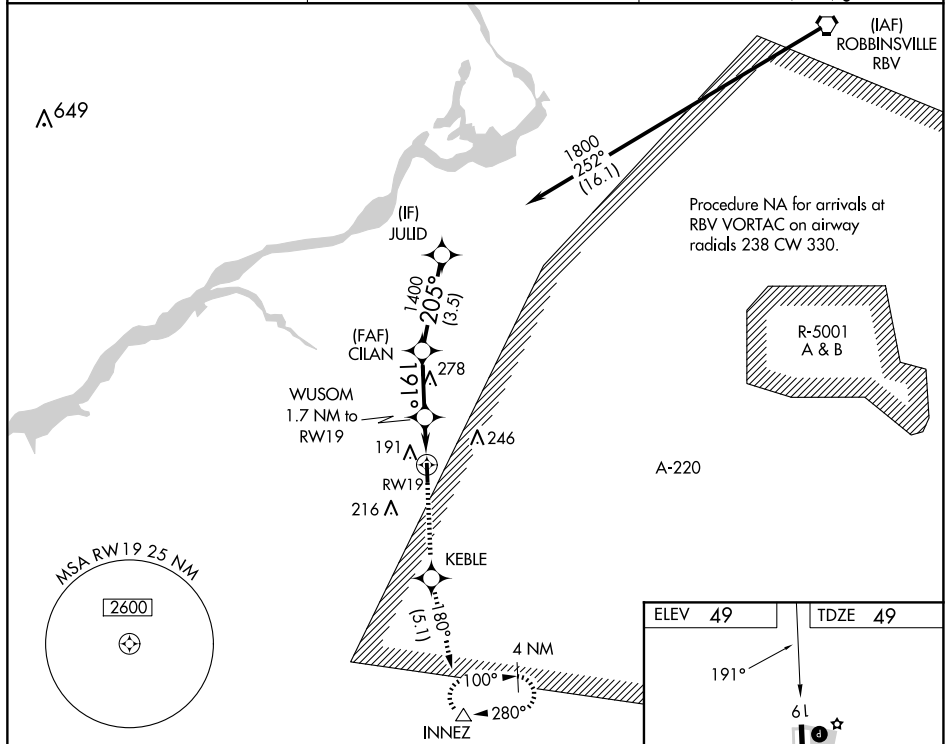
WAAS CH <b>77828</b> <b>W19A</b>	APP CRS <b>191°</b>	Rwy Idg <b>3496</b> TDZE <b>49</b> Apt Elev <b>49</b>
--	------------------------	---

# RNAV (GPS) RWY 19

Baro-VNAV NA when using Northeast Philadelphia altimeter setting. For uncompensated Baro-VNAV systems, LNAV/VNAV NA below -15°C (5°F) or above 54°C (130°F).  
DME/DME RNP-0.3 NA, VDP NA with Northeast Philadelphia altimeter setting. Use Mount Holly altimeter setting, when not received use Northeast Philadelphia altimeter setting and increase all DA/MDA 40 feet and increase LPV and LNAV/VNAV all Cats visibility 1/8 mile.  
Circling Rwy 1 NA at night. Rwy 1 helicopter visibility reduction below 1 SM NA. Rwy 19 helicopter visibility reduction below 3/4 SM NA.

**MISSED APPROACH:**  
Climb to 2000 direct  
KEBLE and on track  
180° to INNEZ and  
hold

VAY ASOS <b>119,325</b>	MC GUIRE APP CON <b>126.475 363,8</b>	UNICOM <b>122,8 (CTAF) 0</b>
----------------------------	--	---------------------------------



VGS1 and RNAV glidepath not coincident (VGS1 Angle 3.20/TCH 22).

JULID 1800

CLAN 1400

WUSOM 1700

GP 3.00° TCH 45

205°

191°

3.5 NM

2.4 NM

0.5 NM

1.2 NM

1.7 NM to RW19

\*1.2 NM to RW19

RW19

\*LNAV only.

CATEGORY	A	B	C	D
LPV DA	415-1¼	366 (400-1¼)		NA
LNAV/VNAV DA	353-1	304 (400-1)		NA
LNAV MDA	460-1	411 (500-1)		NA
CIRCLING	520-1	471 (500-1)		NA

