

APP CRS
011°

Rwy Idg 3496
TDZE 49
Apt Elev 49

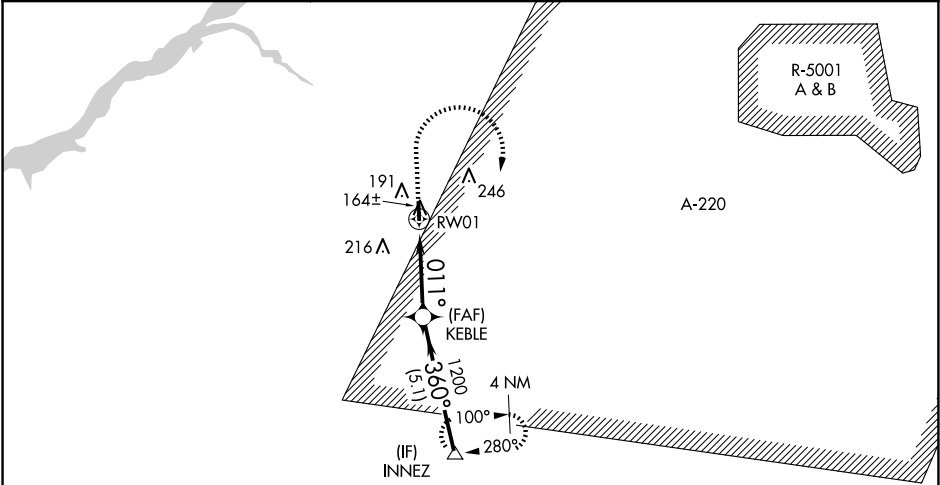
RNAV (GPS) RWY 1
FLYING W (N14)

▼
▲ NA

Use Mount Holly altimeter setting; when not received, use Northeast Philadelphia altimeter setting and increase all MDA 40 feet. DME/DME RNP-0.3 NA. Straight-in Rwy 1 NA at night, Circling Rwy 1 NA at night. Rwy 1 helicopter visibility reduction below 1 SM NA.

MISSED APPROACH: Climb to 500 then climbing right turn to 2000 direct INNEZ and hold.

VAY ASOS 119.325	MC GUIRE APP CON 126.475 363.8	UNICOM 122.8 (CTAF) 0
---------------------	-----------------------------------	--------------------------



ELEV 49 TDZE 49

MIRL Rwy 1-19
REIL Rws 1 and 19

61
3496 x 75
0.4% UP
011°

1700 (8.1)
(IAF) LEBVE

Procedure NA for arrivals on V16 southwest bound.

MSA RWY01 25 NM
2600

500	2000	INNEZ	VGSI and descent angles not coincident (VGSI Angle 3.50/TCH 26).		INNEZ
↑	↷	△	KEBLE		1700
RWY01		011°	1200	360°	
		≤3.00° TCH 45			
		3.5 NM	5.1 NM		
CATEGORY	A	B	C	D	
LNAV MDA	420-1	371 (400-1)	NA		
CIRCLING	520-1	471 (500-1)	NA		