

APP CRS
230°

Rwy Idg
TDZE
184

Apt Elev
184

RNAV (GPS) RWY 23

Z M JACK STELL FLD (C'RT)

RNP APCH - GPS.

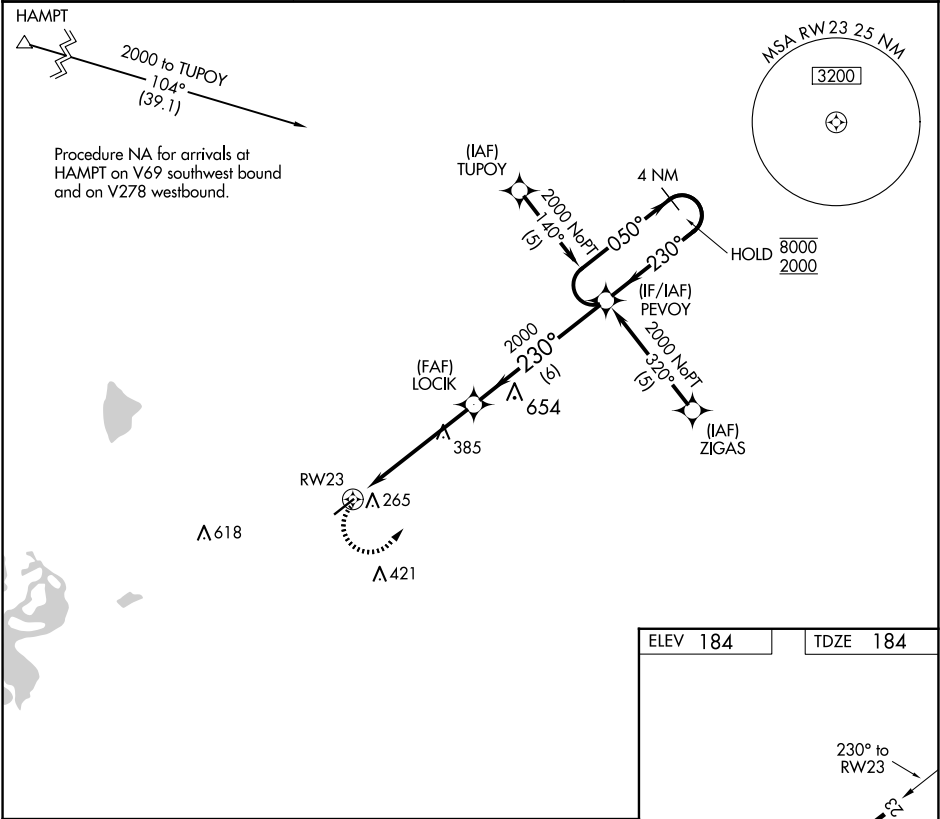
▼

⚠ NA

Rwy 23 helicopter visibility reduction below 1 SM NA. Straight-in and Circling Rwy 23 NA at night. Use Monroe LA. altimeter setting; when not received, use El Dorado altimeter setting and increase all MDA 20 feet, increase LNAV Cat C visibility ½ SM and Circling Cat C visibility ¼ SM.

MISSED APPROACH:
Climbing left turn to 2000 direct PEVOY and hold.

MLU ASOS 125.05	MEMPHIS CENTER 135.875 269.35	UNICOM 122.8 (CTAF)
---------------------------	-----------------------------------------	-------------------------------



2000

PEVOY

LOCIK

PEVOY

4 NM Holding Pattern

RWY23

3.05° TCH 40

230°

050°

230°

8000

2000

5.5 NM

6 NM

CATEGORY	A	B	C	D
LNAV MDA	760-1	576 (600-1)	760-1½ 576 (600-1½)	NA
CIRCLING	760-1	576 (600-1)	840-1¾ 656 (700-1¾)	NA

MIRL Rwy 5-23