

WAAS CH 69532 W10A	APP CRS 103°	Rwy Idg 5006 TDZE 897 Apt Elev 906
--	------------------------	---

RNAV (GPS) RWY 10
LO SIMENSTAD MUNI (OEO)

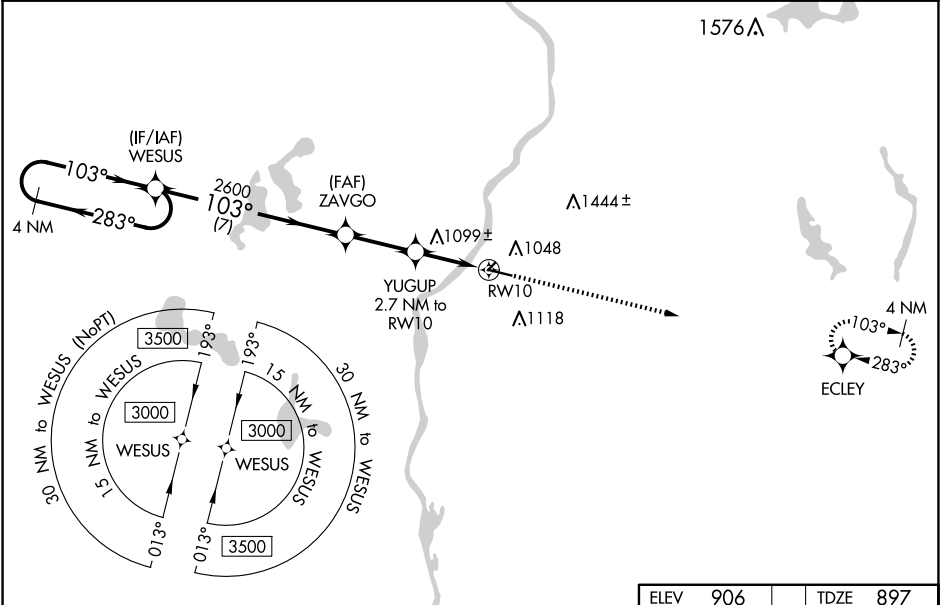
RNP APCH - GPS.

▼ For uncompensated Baro-VNAV systems, LNAV/VNAV NA below -16°C or above 54°C. VDP and Baro-VNAV NA when using Anoka County/Blaine (Janes Fld) altimeter setting. When local altimeter setting not received, use Anoka County/Blaine (Janes Fld) altimeter setting; increase LPV DA to 1204 feet and visibility all Cats ¼ SM; increase LNAV/VNAV DA to 1247 feet and visibility all Cats ¼ SM; increase all MDAs 60 feet and visibility LNAV Cat C ¼ SM and Circling Cat C ¼ SM. Rwy 10 helicopter visibility reduction below ¾ SM NA. Circling NA to Rwy 4 and 22.

▲

MISSED APPROACH:
Climb to 3000 direct
ECLEY and hold.

AWOS-3 119.925	MINNEAPOLIS APP CON 121.2 335.65	GCO 121.725	CTAF 122.9 0
--------------------------	--	-----------------------	------------------------



4 NM Holding Pattern

WESUS

3000

283°

103°

103°

2600

ZAVGO

2600

YUGUP 2.7 NM to RW10

*1760

RW10

*1.4 NM to RW10

7 NM

2.6 NM

1.3 NM

1.4 NM

GP 3.00° TCH 35

*LNAV only

ECLEY

CATEGORY	A	B	C	D
LPV DA	1147-7 ⁸ / ₈	250 (300- ⁷ / ₈)		NA
LNAV/VNAV DA	1190-1	293 (300-1)		NA
LNAV MDA	1360-1	463 (500-1)	1360-1 ³ / ₈ 463 (500-1 ³ / ₈)	NA
C CIRCLING	1360-1 454 (500-1)	1500-1 594 (600-1)	1520-1 ³ / ₄ 614 (700-1 ³ / ₄)	NA

ELEV 906

TDZE 897

2192 X 150

5006 X 75

0.4 % UP

103°

28

REIL Rwy 28 0

MIRL Rwy 10 and 28 0

EC-3, 10 JUL 2025 to 07 AUG 2025

EC-3, 10 JUL 2025 to 07 AUG 2025