

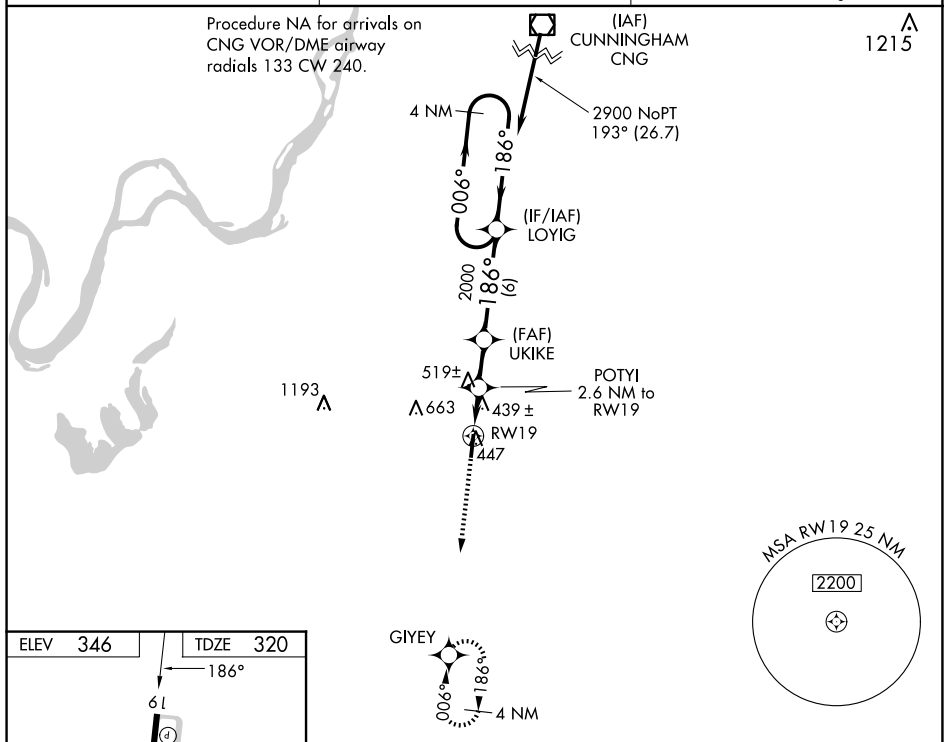
WAAS CH <b>48922</b> <b>W19A</b>	APP CRS <b>186°</b>	Rwy Idg <b>6503</b> TDZE <b>320</b> Apt Elev <b>346</b>
--	------------------------	---

RNAV (GPS) RWY 19  
EVERETT-STEWART RGNL (UCY)

**NA** For uncompensated Baro-VNAV systems, LNAV/VNAV NA below -15°C (5°F) or above 54°C (130°F). DME/DME RNP-0.3 NA. VDP and Baro-VNAV NA with Dyersburg altimeter setting. When local altimeter setting not received, use Dyersburg altimeter setting and increase all DA 72 feet and all MDA 80 feet, increase LPV all Cats visibility ¼ SM, LNAV/VNAV all Cats visibility ¼ SM, LNAV Cats C/D visibility ⅓ SM, and Circling Cat D visibility ¼ SM.

**MISSED APPROACH:**  
Climb to 2300 direct  
GIYEV and hold.

AWOS-3 <b>135.325</b>	MEMPHIS CENTER <b>133.65 292.15</b>	UNICOM <b>122.7 (CTAF) 0</b>
--------------------------	--	---------------------------------



6503 X 100  
0.6% UP  
424

2300  
↑  
GIYGY

VGSI and RNAV glidepath not coincident  
(VGSI Angle 3.00/TCH 29).

4 NM  
Holding Pattern

POTYI  
2.6 NM to  
RW19

UKIKE  
2000

LOYIG

006° →  
← 186°  
2900

\* LNAV only.

\* 1.1 NM to  
RW19

1160\*  
2000

1.1 1.5 2.6 NM 6 NM

CATEGORY	A	B	C	D
LPV DA		570-7 $\frac{7}{8}$	250 (300-7 $\frac{7}{8}$ )	
LNAV/VNAV DA		719-1 $\frac{3}{8}$	399 (400-1 $\frac{3}{8}$ )	
LNAV MDA		700-1	380 (400-1)	

Ⓢ CIRCLING

760-1 414 (500-1)	800-1 454 (500-1)	820-1 $\frac{1}{2}$ 474 (500-1 $\frac{1}{2}$ )	1020-2 $\frac{1}{4}$ 674 (700-2 $\frac{1}{4}$ )
----------------------	----------------------	---	--

MIRL Rwy 1-19  
REIL Rws 1 and 19