

APP CRS
355°

Rwy Idg
5001

TDZE
42

Apt Elev
42

RNAV (GPS) RWY 34

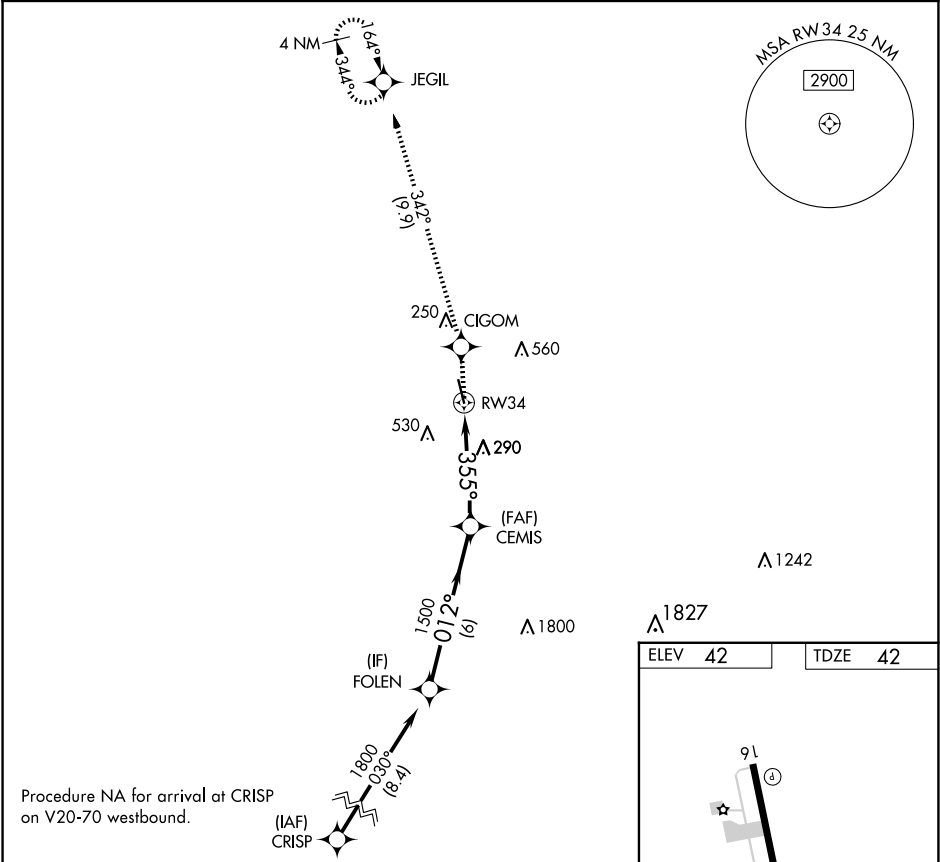
EUNICE (4R7)

RNP APCH.

Procedure NA at night. Rwy 34 helicopter visibility reduction below 1 SM NA. Use Lafayette Rgnl/Paul Fournet Fld altimeter setting.

MISSED APPROACH: Climb to 1700 direct CIGOM and on 342° track to JEGIL and hold.

LFT ASOS 134.05	LAFAYETTE APP CON ★ 128.7 268.7	GCO 135.075	UNICOM 122.8 (CTAF) 0
--------------------	------------------------------------	----------------	--------------------------



1700	CIGOM	JEGIL	Visual Segment - Obstacles.		FOLEN
↑	342° tr		CEMIS		1800
RW34		355°	1500	012°	
4.4 NM		6 NM			
CATEGORY	A	B	C	D	
LNAV MDA	660-1	618 (700-1)	660-1¾ 618 (700-1¾)	NA	

