

WAAS CH <b>99313</b> <b>W19A</b>	APP CRS <b>190°</b>	Rwy ldg TDZE <b>91</b> Apt Elev <b>91</b>
--	------------------------	---

RNAV (GPS) RWY 19

H L SONNY CALLAHAN (CQF)

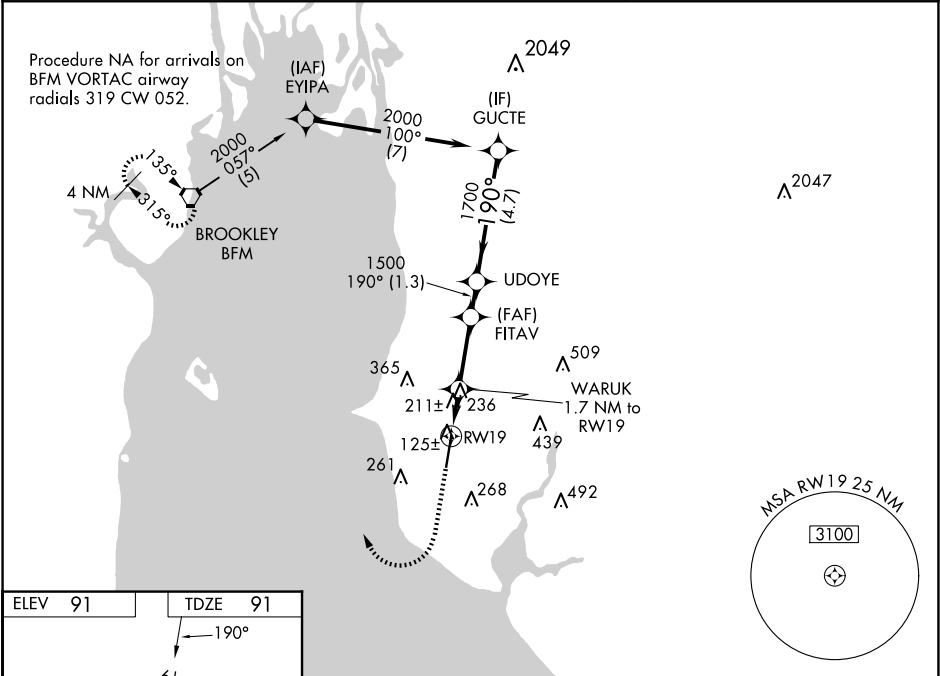
T

A

Baro-VNAV NA when using Mobile Intl altimeter setting. For uncompensated Baro-VNAV systems, LNAV/VNAV NA below -15°C (5°F) or above 43°C (109°F).  
DME/DME RNP-0.3 NA. VDP NA with Mobile Intl altimeter setting. When local altimeter setting not received, use Mobile Intl altimeter setting and increase LPV DA to 383 feet, LNAV/VNAV DA to 555 feet and all MDA 60 feet; increase LNAV and Circling Cats C/D visibility ¼ SM.

MISSED APPROACH: Climb to 1500 then climbing right turn to 2000 direct BFM Vortac and hold.

AWOS-3PT <b>118.425</b>	MOBILE APP CON ★ <b>118.5 269.3</b>	UNICOM <b>123.0 (CTAF) 0</b>
----------------------------	--	---------------------------------



ELEV 91	TDZE 91	1500	2000	BFM	GUOTE
			Procedure Turn NA		
HIRL Rwy 1-19 0		*LNAV only.		GP 3.00° TCH 35	
REIL Rwys 1 and 19 0		*1.2 NM to RW19		660*	
		1.2		0.5	
		2.6		1.3	
		4.7			
CATEGORY		A		B	
LPV DA		341-7/8		250 (300-7/8)	
LNAV/VNAV DA		513-1 1/2		422 (500-1 1/2)	
LNAV MDA		500-1		409 (500-1)	
CIRCLING		560-1		580-1	
		469 (500-1)		489 (500-1)	
		720-1 3/4		740-2	
		629 (700-1 3/4)		649 (700-2)	