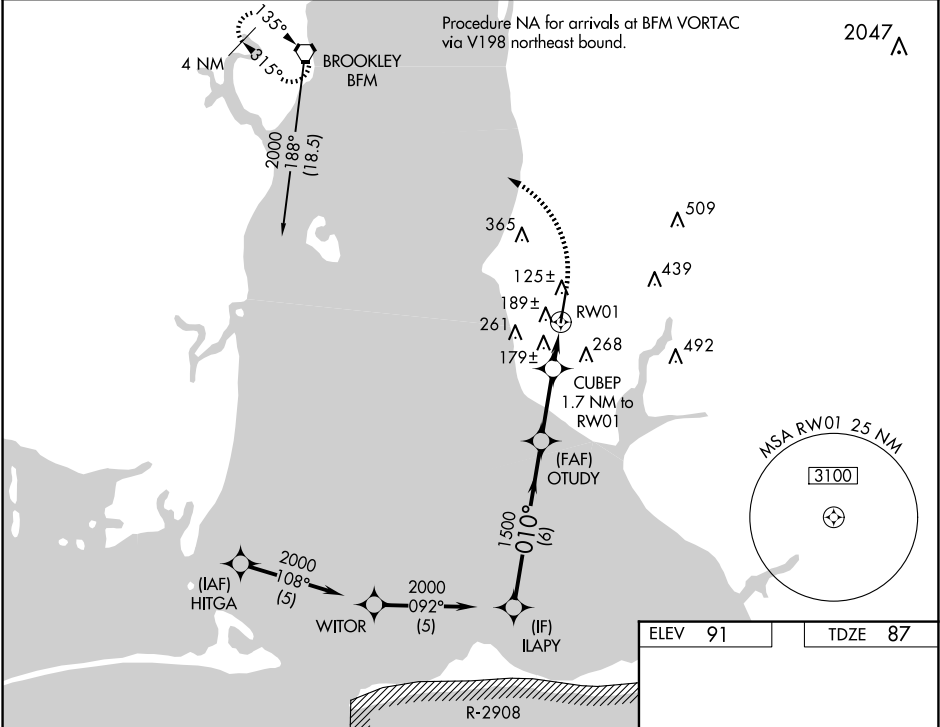


WAAS CH 93513 W01A	APP CRS 010°	Rwy Idg TDZE 87 Apt Elev 91
--	------------------------	---

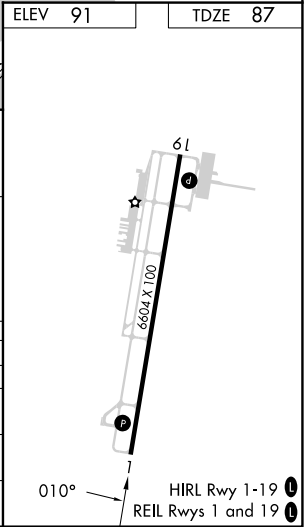
RNAV (GPS) RWY 1
H L SONNY CALLAHAN (CQF)

<p>▼ Baro-VNAV NA when using Mobile Intl altimeter setting. For uncompensated Baro-VNAV systems, LNAV/VNAV NA below -15°C (5°F) or above 43°C (109°F). DME/DME RNP-0.3 NA.</p> <p>▲ VDP NA with Mobile Intl altimeter setting. When local altimeter setting not received, use Mobile Intl altimeter setting and increase LPV DA to 329 feet, LNAV/VNAV DA to 517 feet, and all MDA 60 feet; increase LNAV Cats C/D visibility 1/8 SM and Circling Cats C/D 1/4 SM.</p>	<p>MISSED APPROACH: Climb to 700 then climbing left turn to 2000 direct BFM. VORTAC and hold.</p>
--	--

AWOS-3PT 118.425	MOBILE APP CON ★ 118.5 269.3	UNICOM 123.0 (CTAF) 0
----------------------------	--	---------------------------------



Procedure Turn NA	2000	010°	1500	010°	700	2000	BFM
GP 3.00°	TCH 35	6 NM	2.6 NM	0.7 NM	1 NM		
CATEGORY	A	B	C	D			
LPV DA		287-3/4	200 (200-3/4)				
LNAV/VNAV DA		475-13/8	388 (400-13/8)				
LNAV MDA		440-1	353 (400-1)				
CIRCLING	560-1 469 (500-1)	580-1 489 (500-1)	720-13/4 629 (700-13/4)	740-2 649 (700-2)			



SE-4, 10 JUL 2025 to 07 AUG 2025

SE-4, 10 JUL 2025 to 07 AUG 2025