

APP CRS  
**076°**

Rwy Idg  
**4997**

TDZE  
**24**

Apt Elev  
**26**

**RNAV (GPS) RWY 8**

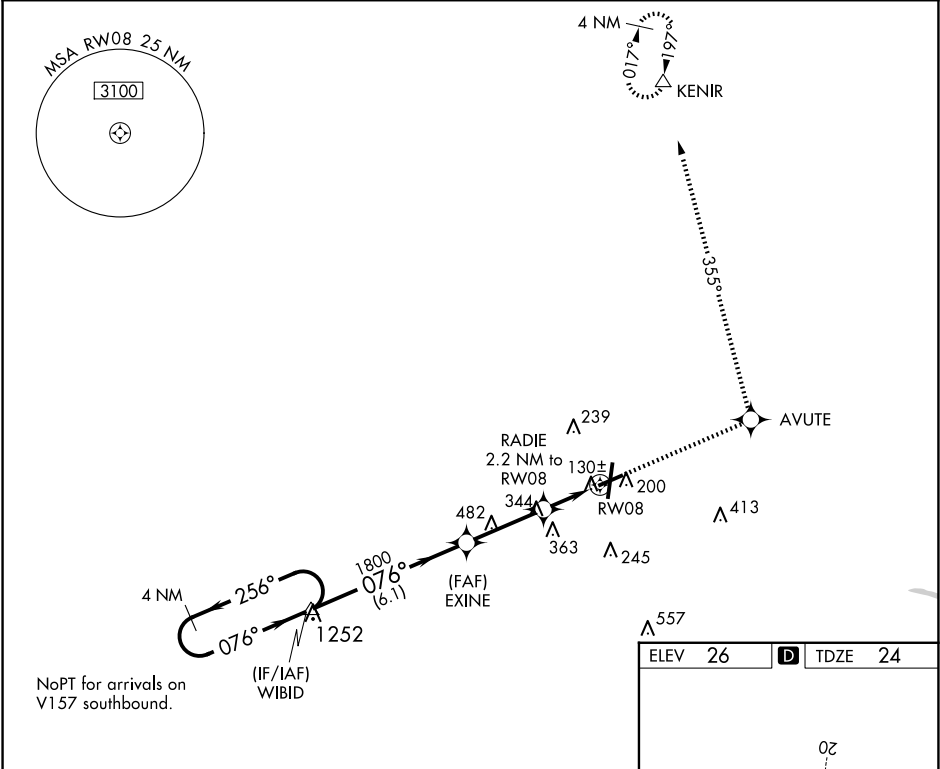
PITT-GREENVILLE (PGV)

RNP APCH - GPS.

▼ Rwy 8 helicopter visibility reduction below ¾ SM NA. When local altimeter setting not received use Washington altimeter setting and increase all MDAs 60 feet, LNAV visibility Cat C and D ½ SM and Circling visibility Cat D ¼ SM.

MISSED APPROACH: Climb to 3000 direct AVUTE and via 355° track to KENIR and hold.

AWOS-3 <b>128.425</b>	WASHINGTON CENTER <b>123.85 279.65</b>	UNICOM <b>122.8 (CTAF) 1</b>
--------------------------	---	---------------------------------



VGSI and descent angles not coincident (VGSI Angle 4.00/TCH 53).

4 NM Holding Pattern

WIBID

2700

256° 076°

EXINE

1800

3.14° TCH 42

780

2.2 NM to RW08

RW08

6.1 NM 3 NM 2.2 NM

CATEGORY	A	B	C	D
LNAV MDA	500-1 476 (500-1)	500-1 476 (500-1)	500-1 476 (500-1)	500-1 476 (500-1)
CIRCLING	600-1 574 (600-1)	620-1 594 (600-1)	700-2 674 (700-2)	800-2 774 (800-2)

3000 AVUTE tr 355° KENIR

HIRL Rwy 2-20 1  
MIRL Rwy 8-26 1  
REIL Rws 2, 8, and 26