

WAAS CH 53711 W26A	APP CRS 256°	Rwy Idg 4997 TDZE 24 Apt Elev 26
--	------------------------	---

RNAV (GPS) RWY 26

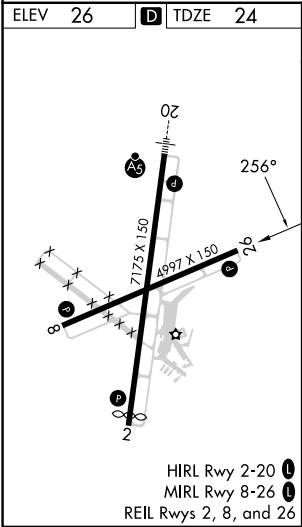
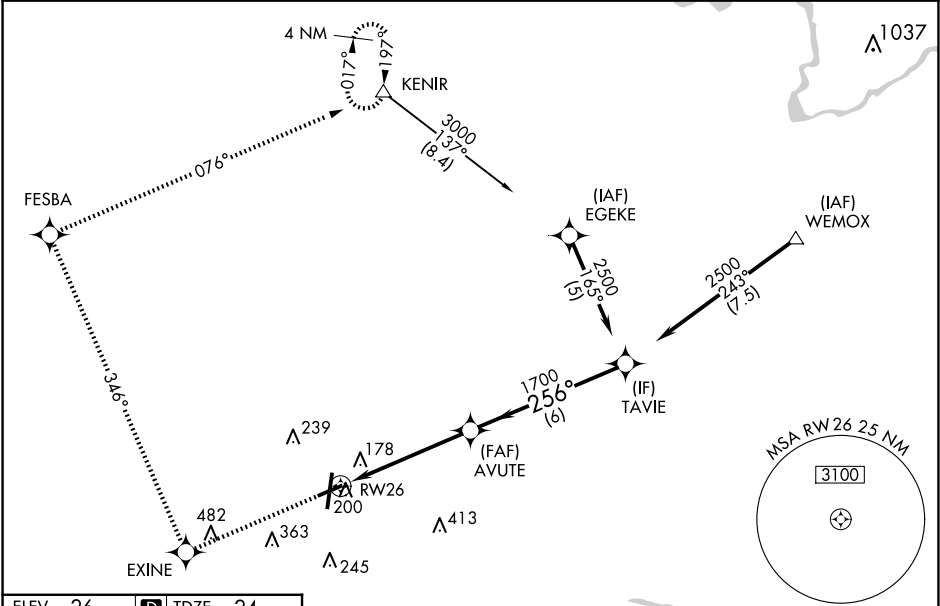
PITT-GREENVILLE (PGV)

RNP APCH - GPS.

▼ Baro-VNAV NA when using Washington altimeter setting. For uncompensated Baro-VNAV systems, LNAV/VNAV NA below -15°C or above 48°C. Rwy 26 helicopter visibility reduction below ¾ SM NA. When local altimeter setting not received use Washington altimeter setting and increase LPV DA to 376 feet, visibility all Cats ¼ SM; increase LNAV/VNAV DA to 505, visibility all Cats ¼ SM; increase all MDAs 60 feet, LNAV visibility Cat C and D and Circling Cat D ¼ SM.

MISSED APPROACH: Climb to 3000 direct EXINE and via 346° track to FESBA and via 076° track to KENIR and hold.

AWOS-3 128.425	WASHINGTON CENTER 123.85 279.65	UNICOM 122.8 (CTAF) 0
--------------------------	---	---------------------------------



ELEV 26	TDZE 24
Procedure Turn NA	
GP 3.00° TCH 45	
CATEGORY A B C D	
LPV DA 335-7/8 311 (400-7/8)	
LNAV/VNAV DA 464-1 1/4 440 (500-1 1/4)	
LNAV MDA 520-1 496 (500-1) 520-1 3/8 496 (500-1 3/8)	
CIRCLING 600-1 574 (600-1) 620-1 594 (600-1) 700-2 674 (700-2) 800-2 1/2 774 (800-2 1/2)	