

WAAS CH 42738 W02A	APP CRS 017°	Rwy Idg TDZE 24 Apt Elev 26
--	------------------------	---

RNAV (GPS) RWY 2

PITT-GREENVILLE (PGV)

RNP APCH-GPS.

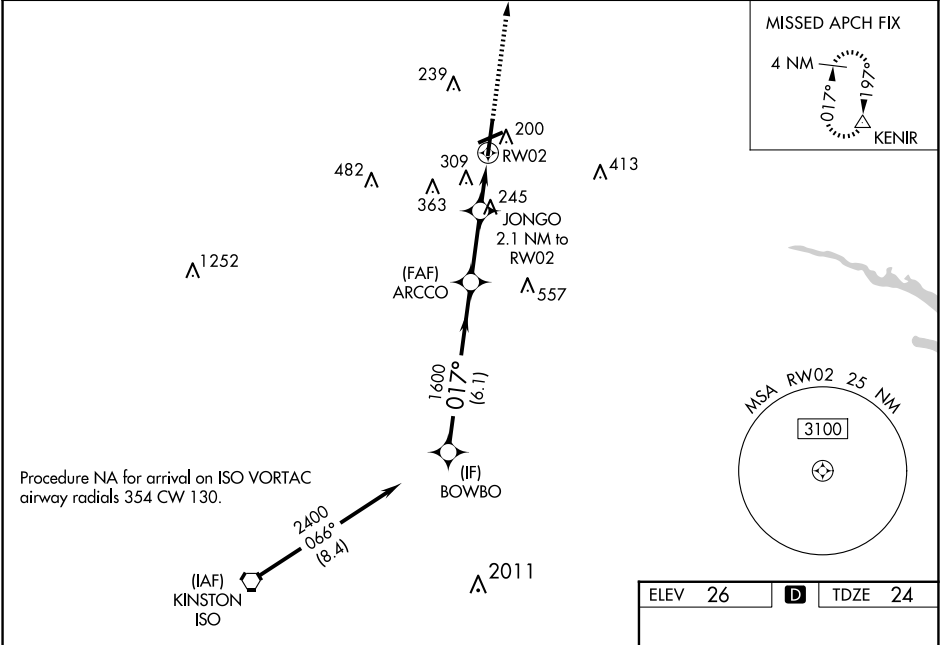
▼

▲

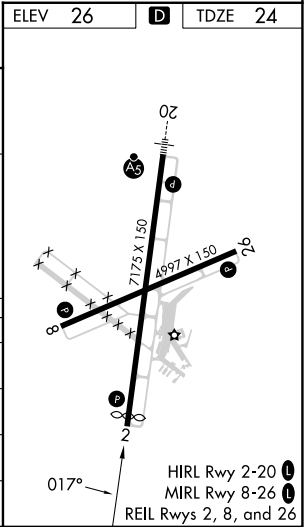
Baro-VNAV NA when using Washington altimeter setting. For uncompensated Baro-VNAV systems, LNAV/VNAV NA below -15°C or above 50°C. Rwy 2 helicopter visibility reduction below ¾ SM NA. When local altimeter setting not received use Washington altimeter setting and increase LPV DA to 444 feet, visibility all Cats ½ SM; increase LNAV/VNAV DA to 661; increase all MDAs 60 feet, LNAV visibility Cat C and D and Circling Cat D ¼ SM. VDP NA when using Washington altimeter setting.

MISSED APPROACH: Climb to 2100 direct KENIR and hold.

AWOS-3 128.425	WASHINGTON CENTER 123.85 279.65	UNICOM 122.8 (CTAF) 1
--------------------------	---	---------------------------------



VGSi and RNAV glidepath not coincident (VGSi Angle 3.10/TCH 41).				
BOWBO 2400 017° 1600 ARCCO 1600 JONGO 2.1 NM to RW02 2100 KENIR				
GP 3.07° TCH 57 6.1 NM 2.6 NM 0.6 NM 1.5 NM				
*760 *1.5 NM to RW02 RW02 *LNAV only.				
CATEGORY	A	B	C	D
LPV DA	403-1		379 (400-1)	
LNAV/VNAV DA	620-1¾		596 (600-1¾)	
LNAV MDA	540-1	516 (600-1)	540-1⅜	516 (600-1⅜)
CIRCLING	600-1 574 (600-1)	620-1 594 (600-1)	700-2 674 (700-2)	800-2½ 774 (800-2½)



SE-2, 10 JUL 2025 to 07 AUG 2025

SE-2, 10 JUL 2025 to 07 AUG 2025