

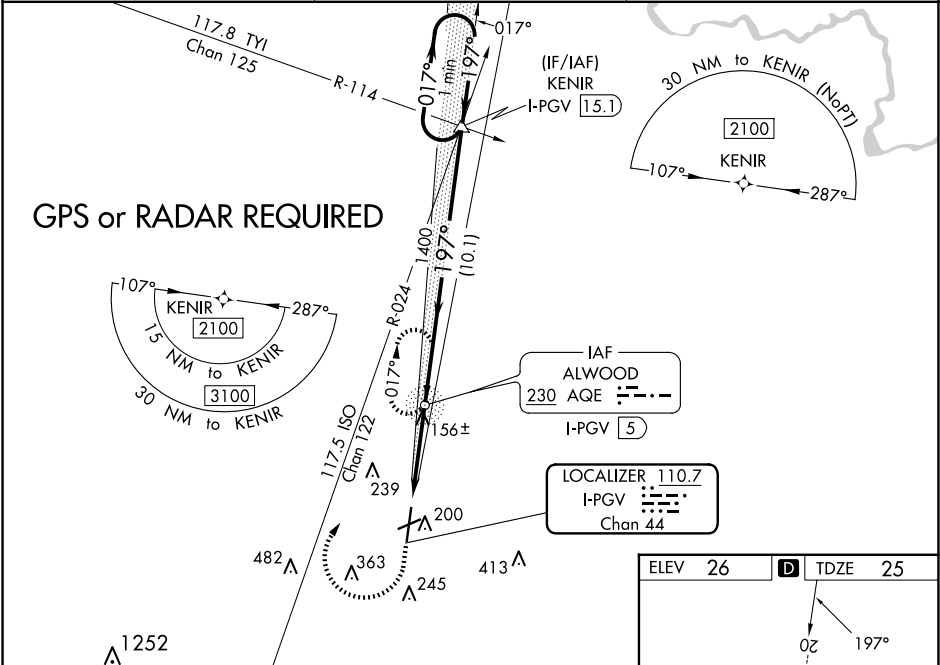
LOC/DME I-PGV 110.7 Chan 44	APP CRS 197°	Rwy Idg 6505 TDZE 25 Apt Elev 26	ILS Y or LOC Y RWY 20 PITT-GREENVILLE (PGV)
---	------------------------	---	--

ADF required. VDP NA with Washington altimeter setting. When local altimeter setting not received use Washington altimeter setting and increase S-ILS 20 DA to 298 feet; increase all MDAs 60 feet and S-LOC 20 visibility Cat C/D ¼ SM, and Circling visibility Cat D ¼ SM. For inop ALS when using Washington altimeter setting, increase S-ILS 20 all Cats visibility ¾ SM, and S-LOC 20 visibility Cat A/B ¼ SM. Inop table does not apply to S-ILS all Cats. Rwy 20 helicopter visibility reduction below ¾ SM NA. For inop ALS, increase S-LOC 20 visibility Cat A/B ¼ SM, Cat C/D ¾ SM.

MALSR
AS

MISSED APPROACH: Climb to 800 then climbing right turn to 1600 direct AQE NDB and hold.

AWOS-3 128.425	WASHINGTON CENTER 123.85 279.65	UNICOM 122.8 (CTAF) 1
--------------------------	---	---------------------------------



800

1600

AQE

↑

↗

One Minute Holding Pattern

KENIR

I-PGV

15.1

AQE NDB

I-PGV

5

1262

197°

1400

017°

2100

←197°

GS 3.00°

TCH 50

1 NM

2.7 NM

10.1 NM

*LOC only.

I-PGV

1.3

*I-PGV

2.2

CATEGORY	A	B	C	D
S-ILS 20	257-¾ 231 (300-¾)			
S-LOC 20	420-¾ 394 (400-¾)			
CIRCLING	600-1 574 (600-1)	620-1 594 (600-1)	700-2 674 (700-2)	800-2½ 774 (800-2½)

ELEV 26

TDZE 25

HIRL Rwy 2-20

MIRL Rwy 8-26

REIL Rws 2, 8, and 26

FAF to MAP 3.7 NM

Knots	60	90	120	150	180
Min:Sec	3:42	2:28	1:51	1:29	1:14