

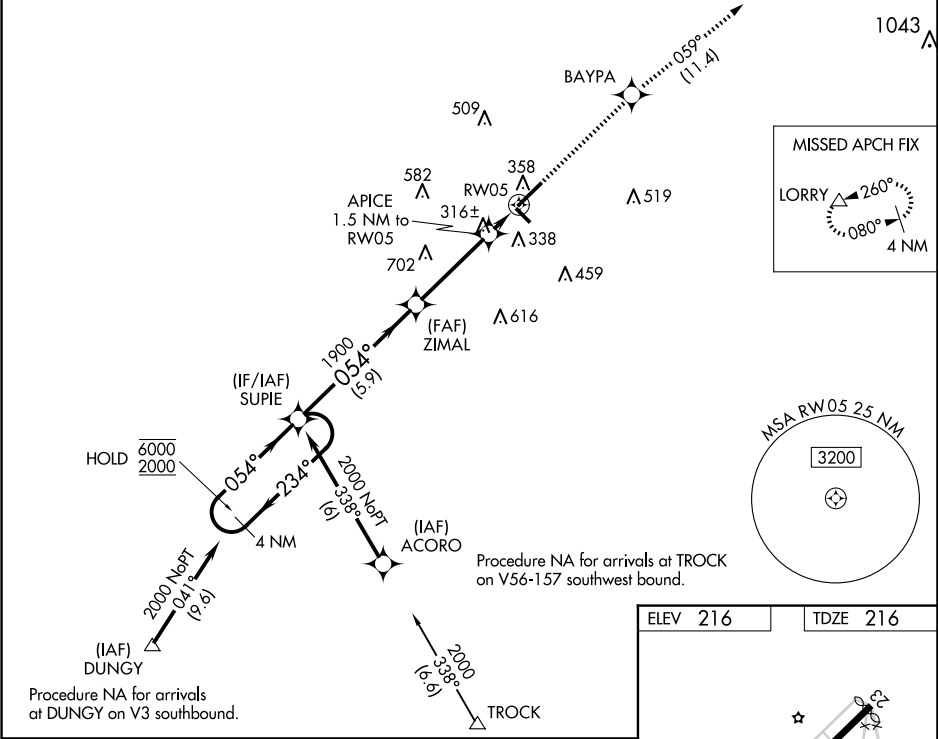
WAAS CH 90423 W05A	APP CRS 054°	Rwy Idg TDZE 216 Apt Elev 216	6503
--	------------------------	---	-------------

RNAV (GPS) RWY 5

LAURINBURG/MAXTON (MEB)

RNP APCH. <div><div>▼</div><div>▲</div></div> <div>Circling to Rwy 13 and 31 NA at night. For uncompensated Baro-VNAV systems, LNAV/VNAV NA below -1.5°C or above 42°C. For inop ALS, increase LNAV/VNAV all Cats visibility to ¾ SM, and LNAV Cat C/D visibility to 1 SM.</div>		MALSR <div>AS</div>	MISSED APPROACH: Climb to 2400 direct BAYPA and on track 059° to LORRY and hold.
---	--	------------------------	--

ASOS 134.125	FAYETTEVILLE APP CON 127.8 343.725	GCO 135.075	UNICOM 122.8 (CTAF) 0
------------------------	--	-----------------------	---------------------------------



4 NM Holding Pattern		SUPIE	ZIMAL	APICE	2400	BAYPA	LORRY
6000 ← 234°		2000 → 054°	1900	1.5 NM to RW05	↑	tr 059°	△
GP 3.00° TCH 51		054°	1900	*1 NM to RW05	*LNAV only.		
		5.9 NM	3.6 NM	0.5 NM	1 NM		
CATEGORY		A	B	C	D		
LPV DA			416-½	200 (200-½)			
LNAV/VNAV DA			472-½	256 (300-½)			
LNAV MDA		580-½	364 (400-½)	580-⅝	364 (400-⅝)		
CIRCLING		740-1	524 (600-1)	780-1½ 564 (600-1½)	1020-2½ 804 (900-2½)		

