

MAXTON, NORTH CAROLINA

AL-5519 (FAA)

22223

WAAS CH 61023 W23A	APP CRS 234°	Rwy Idg 6316 TDZE 214 Apt Elev 216
--	------------------------	---

RNAV (GPS) RWY 23

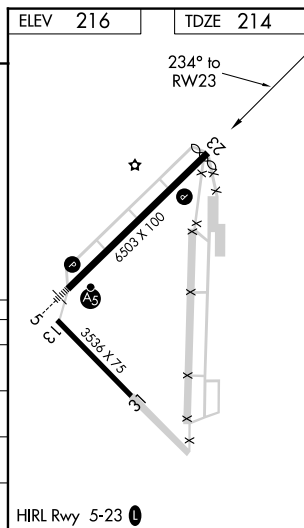
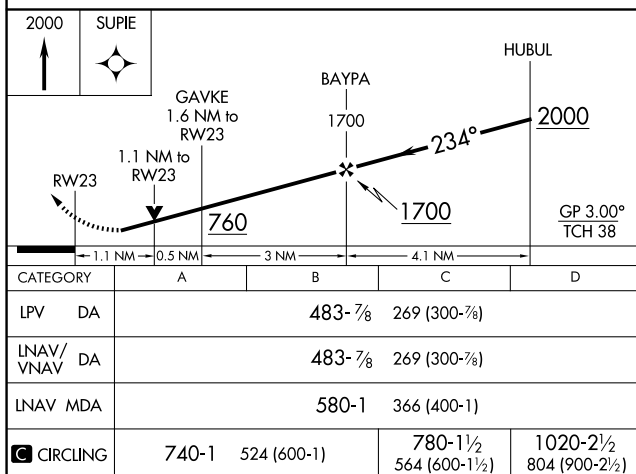
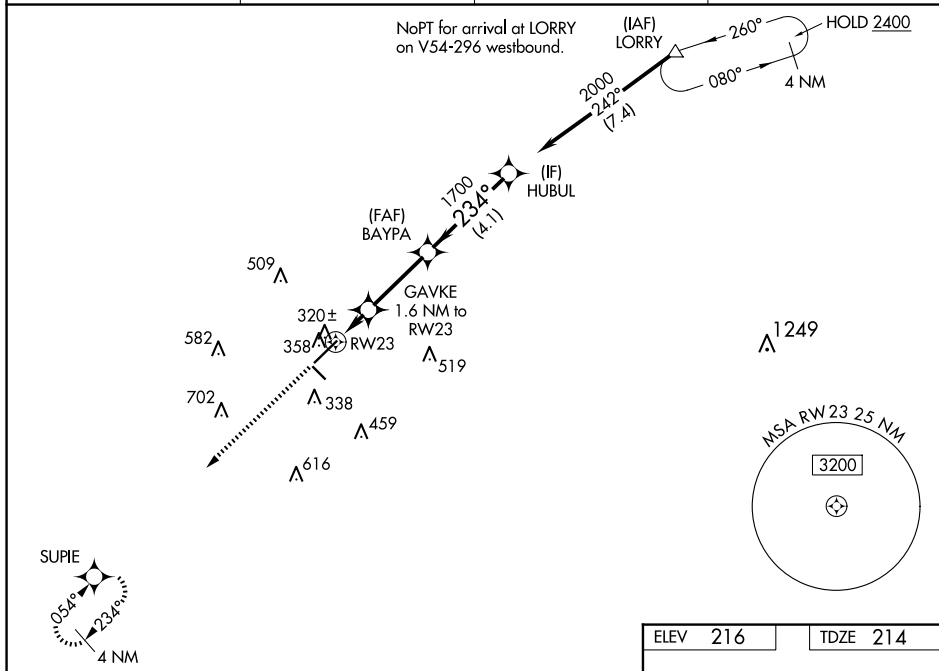
LAURINBURG/MAXTON (MEB)

RNP APCH-GPS.

- T** Circling to Rwy 13 and 31 NA at night. Rwy 23 helicopter visibility
A reduction below $\frac{3}{4}$ SM NA. For uncompensated Baro-VNAV systems,
LNAV/VNAV NA below -11°C or above 54°C.

MISSED APPROACH: Climb to 2000 direct SUPIE and hold.

ASOS 134.125	FAYETTEVILLE APP CON 127.8 343.725	GCO 135.075	UNICOM 122.8 (CTAF) ①
------------------------	--	-----------------------	---------------------------------



SE-2, 10 JUL 2025 to 07 AUG 2025

SE-2, 10 JUL 2025 to 07 AUG 2025

MAXTON, NORTH CAROLINA

Amdt 2A 11AUG22

34°48'N-79°22'W

LAURINBURG/MAXTON (MEB)

RNAV (GPS) RWY 23