

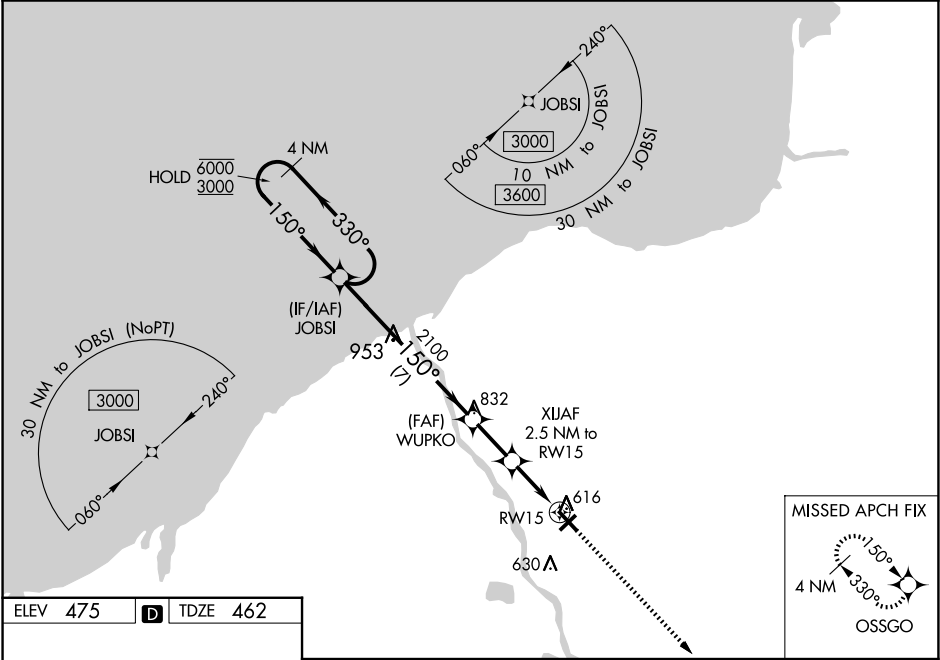
WAAS CH 72820 W15A	APP CRS 150°	Rwy Idg TDZE 462 Apt Elev 475
--	------------------------	---

RNAV (GPS) RWY 15

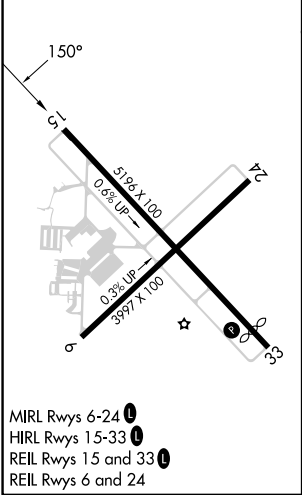
OSWEGO COUNTY (FZY)

RNP APCH.	MISSED APPROACH: Climb to 3000 direct OSSGO and hold.
<div><div>T</div><div>A</div></div> <div>Rwy 15 helicopter visibility reduction below ¾ SM NA. For uncompensated Baro-VNAV systems, LNAV/VNAV NA below -24°C or above 54°C.</div>	

ASOS 119.275	SYRACUSE APP CON 126.125 269.125	UNICOM 123.0 (CTAF) 0
------------------------	--	---------------------------------



ELEV 475	D	TDZE 462
----------	---	----------



4 NM Holding Pattern	JOBSI	WUPKO	XIJAF	2.5 NM to RWY 15	*1.2 NM to RWY 15	RWY 15
6000 3000	330° 150°	2100	2100	*1380		
GP 3.30° TCH 60						
	7 NM	2.1 NM	1.3 NM	1.2 NM		
CATEGORY	A	B	C	D		
LPV DA	783-1	321 (400-1)			NA	
LNAV/VNAV DA	887-1¼	425 (500-1¼)			NA	
LNAV MDA	920-1	458 (500-1)	920-1⅜ 458 (500-1⅜)		NA	
CIRCLING	920-1 445 (500-1)	940-1 465 (500-1)	960-1½ 485 (500-1½)		NA	