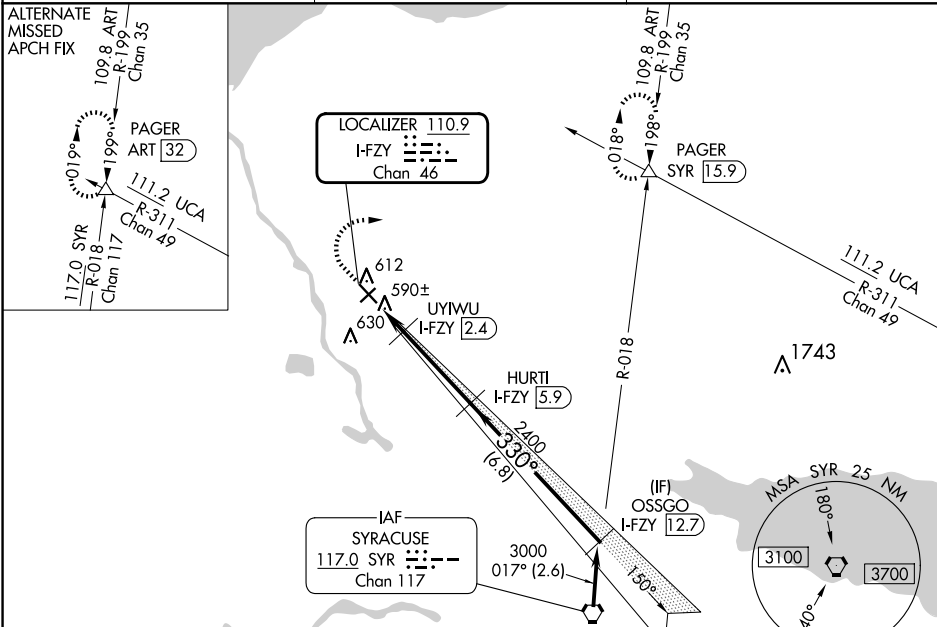


LOC/DME I-FZY 110.9 Chan 46	APP CRS 330°	Rwy Idg TDZE 471 Apt Elev 475
---	------------------------	---

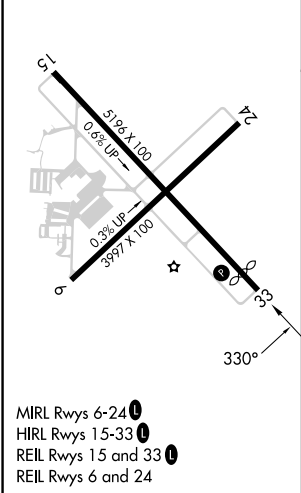
ILS or LOC RWY 33
OSWEGO COUNTY (F'ZY)

DME required.	MISSED APPROACH: Climb to 1200 then climbing right turn to 3000 on heading 100° and SYR VORTAC R-018 to PAGER/SYR 15.9 DME and hold.
NA Circling Rwy 24 NA at night. Rwy 33 helicopter visibility reduction below ¾ SM NA.	

ASOS 119.275	SYRACUSE APP CON 126.125 269.125	UNICOM 123.0 (CTAF) 0
------------------------	--	---------------------------------



ELEV 475	D	TDZE 471
-----------------	----------	-----------------



Procedure NA for arrivals at SYR VORTAC on V29 southbound.				
1200	3000	SYR R-018	PAGER	
*LOC only				
CATEGORY	A	B	C	D
S-ILS 33	814-1	343 (400-1)		NA
S-LOC 33	840-1	369 (400-1)		NA
CIRCLING	920-1 445 (500-1)	940-1 465 (500-1)	960-1½ 485 (500-1½)	NA