

WAAS CH 56434 W09A	APP CRS 094°	Rwy Idg TDZE Apt Elev	4000 1148 1150
--	------------------------	-----------------------------	---

RNAV (GPS) RWY 9

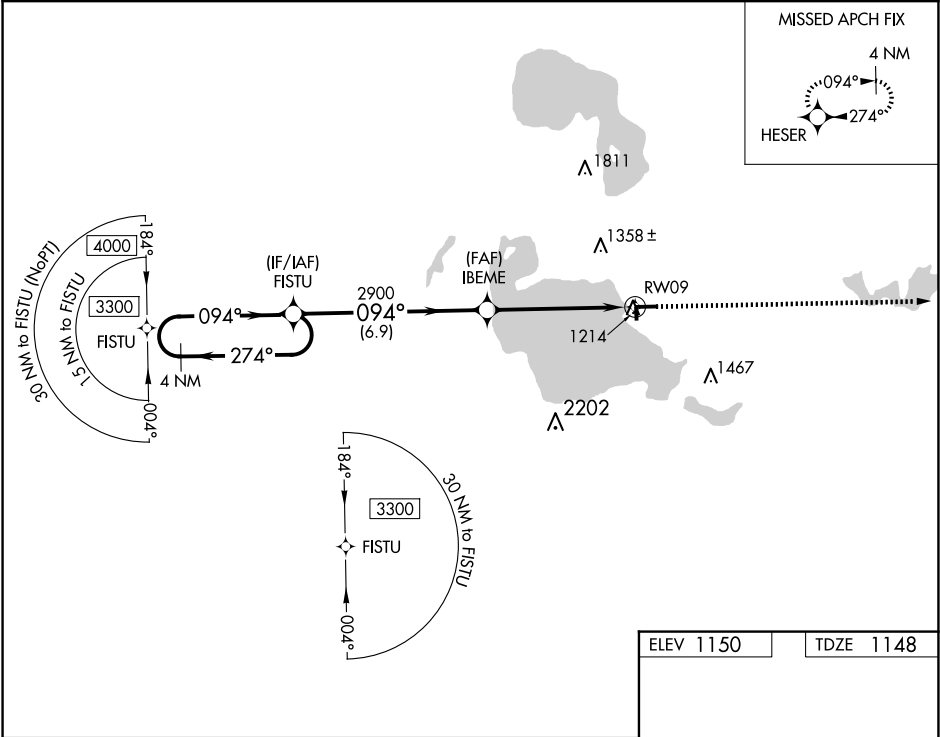
ROSCOMMON COUNTY/BLODGETT MEML (HTL)

⚠

When local altimeter setting not received, use Gaylord altimeter setting and increase all MDAs 120 feet and visibility Cat C/D ½ SM. DME/DME RNP-0.3 NA. Procedure NA at night. Helicopter visibility reduction below 1 SM NA. Circling NA to Rwy 18 and 36.

MISSED APPROACH:
Climb to 3300 direct HESER and hold.

ASOS 118.05	MINNEAPOLIS CENTER 125.475 269.45	UNICOM 122.8 (CTAF) 0
-----------------------	---	---------------------------------



4 NM
Holding Pattern

Visual Segment - Obstacles

3300

HESER

3300

274°

FISTU

094°

094°

IBEME

2900

RW09

094°

6.9 NM

5.4 NM

CATEGORY

A

B

C

D

LP MDA

1520-1

372 (400-1)

LNAV MDA

1580-1

432 (500-1)

1580-1¼

432 (500-1¼)

CIRCLING

1600-1

450 (500-1)

1700-1½

550 (600-1½)

1820-2

670 (700-2)

094°

81

4000 X 75

27

2000 X 100

36

HIRL Rwy 9-27

REIL Rws 9 and 27

EC-1, 10 JUL 2025 to 07 AUG 2025

EC-1, 10 JUL 2025 to 07 AUG 2025