

LOC/DME	I-GVL	Rwy Ldg	5370
110.55	APP CRS	TDZE	1275
Chan 42 (Y)	044°	Apt Elev	1277

ILS or LOC RWY 5

LEE GILMER MEML (GVL)

DME required.
RADAR required for procedure entry.

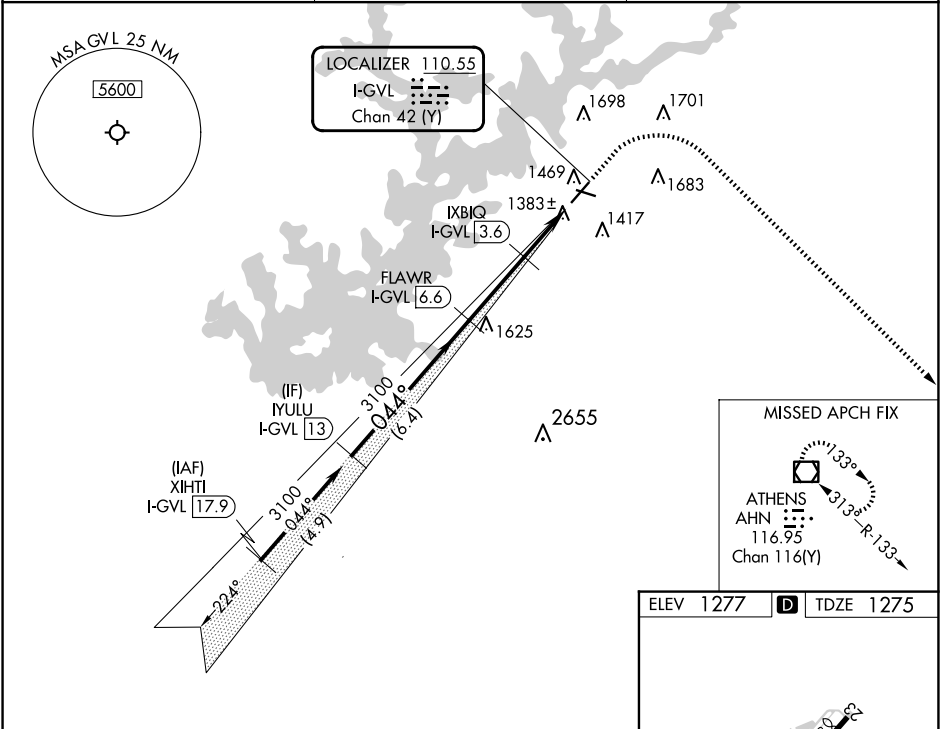
MAJSR

MISSED APPROACH: Climb to 2000 then climbing right turn to 3100 direct AHN VOR/DME and hold.

⚠

Circling Rwy 11, 29 NA at night.
For inop ALS increase S-LOC 5 Cats C and D visibility to 1 SM.

ASOS 126.475	ATLANTA APP CON★ 132.475 291.1	UNICOM 123.075 (CTAF) 0
-----------------	-----------------------------------	----------------------------



VGSI and ILS glidepath not coincident (VGSI Angle 3.00/TCH 31).				2000	3100	AHN
CATEGORY	A		B	C	D	
S-ILS 5	1475-½			200 (200-½)		
S-LOC 5	1640-½	365 (400-½)		1640-⅝	365 (400-⅝)	
CIRCLING	1780-1 503 (600-1)	2000-1 723 (800-1)	2000-2 723 (800-2)	2020-2½ 743 (800-2½)		

Diagram showing the missed approach climb and turn. The path starts at 3100 feet, turns right 044°, and then turns right 075° to a 0.3% UP climb. The distance from the start of the turn to the end of the climb is 4003 X 100. The distance from the start of the turn to the end of the climb is 5468 X 100. The distance from the start of the turn to the end of the climb is 4003 X 100. The distance from the start of the turn to the end of the climb is 5468 X 100. The distance from the start of the turn to the end of the climb is 4003 X 100. The distance from the start of the turn to the end of the climb is 5468 X 100.

HIRL Rwy 5-23					
FAF to MAP 5.6 NM					
Knots	60	90	120	150	180
Min:Sec	5:36	3:44	2:48	2:14	1:52