

VOR RWY 31  
THE O'NEILL MUNI-JOHN L BAKER FLD (ONL)

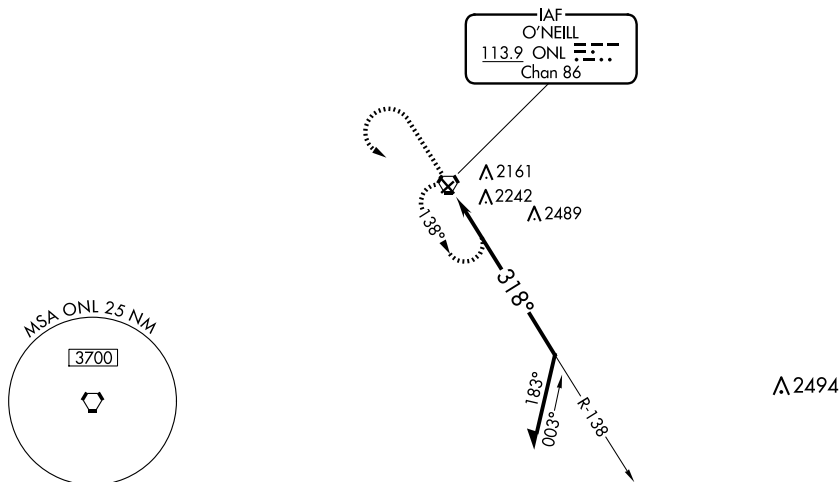
Night landing: Rwy 4, 22 NA.

**MISSED APPROACH:** Climb to 3600 then left turn direct  
ONL VORTAC and hold.

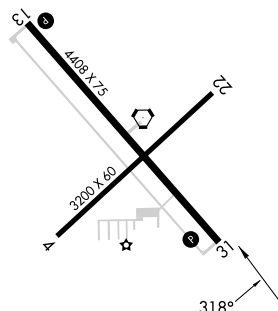
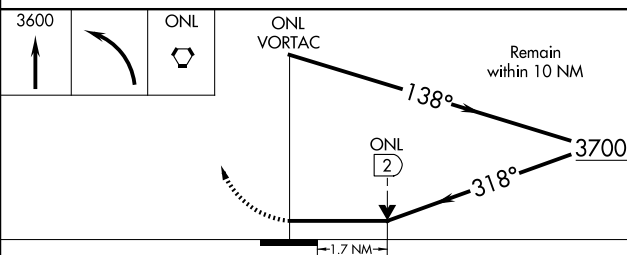
AWOS-3  
121.125


MINNEAPOLIS CENTER  
128.0 257.95

UNICOM  
122.8 (CTAF) **L**



TDZE 2032

REIL Rwy 13 and 31 **L**MIRL Rwy 13-31 **L**

CATEGORY	A	B	C	D
S-31	2600-1	568 (600-1)	2600-1½	568 (600-1½)
 CIRCLING	2600-1	566 (600-1)	2680-1¾ 646 (700-1¾)	2840-2½ 806 (900-2½)