

WAAS  
CH **70503**  
**W31A**

APP CRS  
**310°**

Rwy Idg  
TDZE  
Apt Elev  
**4408**  
**2032**  
**2034**

RNAV (GPS) RWY 31

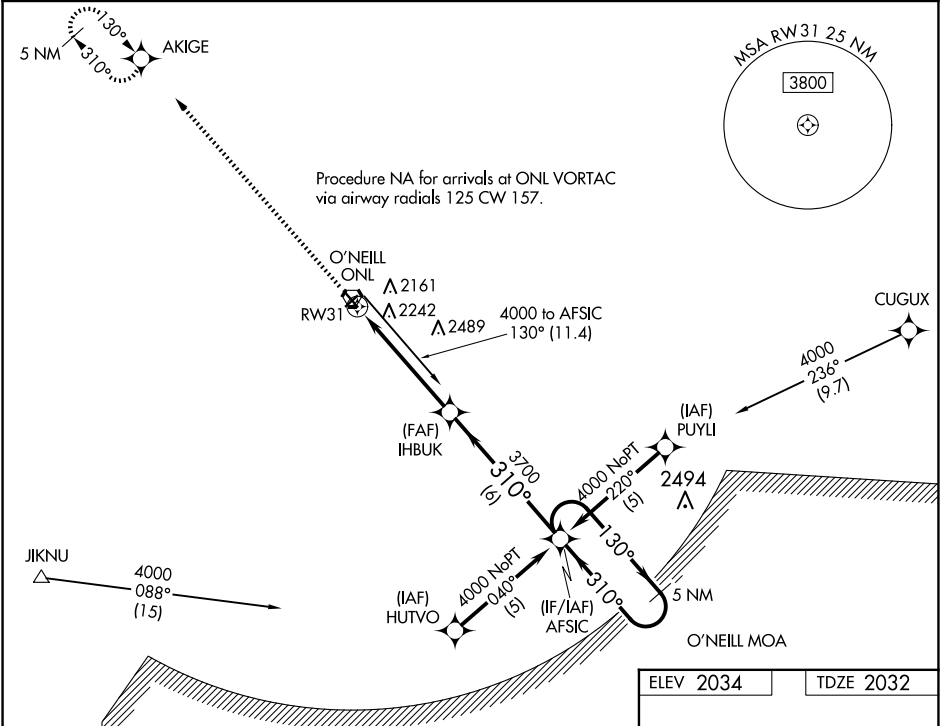
THE O'NEILL MUNI-JOHN L BAKER FLD (ONL)

⚠

When local altimeter setting not received, use Evelyn Sharp Fld altimeter setting and increase LPV DA to 2407 feet, LNAV/VNAV DA to 2726 feet; Increase all MDAs 140 feet and visibility Cat C ½ SM. Baro-VNAV NA when using Evelyn Sharp Fld altimeter setting. For uncompensated Baro-VNAV systems, LNAV/VNAV NA below -19°C (-2°F) or above 54°C (130°F). DME/DME RNP-0.3 NA. Helicopter visibility reduction below 1 SM NA. Night landing: Rwy 4, 22 NA.

MISSED APPROACH: Climb to 4000 direct AKIGE and hold.

AWOS-3 <b>121.125</b>	MINNEAPOLIS CENTER <b>128.0 257.95</b>	UNICOM <b>122.8 (CTAF) 1</b>
--------------------------	---	---------------------------------



4000

AKIGE

AFSIC

5 NM Holding Pattern

IHBUK

310°

130°

4000

3700

GP 3.00°

TCH 39

RW31

5 NM

6 NM

CATEGORY	A	B	C	D
LPV DA	2282-1	250 (300-1)		NA
LNAV/VNAV DA	2601-2	569 (600-2)		NA
LNAV MDA	2580-1	548 (600-1)	2580-1½ 548 (600-1½)	NA
CIRCLING	2600-1	566 (600-1)	2680-1¾ 646 (700-1¾)	NA

REIL Rwy 13 and 31

MIRL Rwy 13-31

13

31

4000 X 75

3200 X 60

310°